



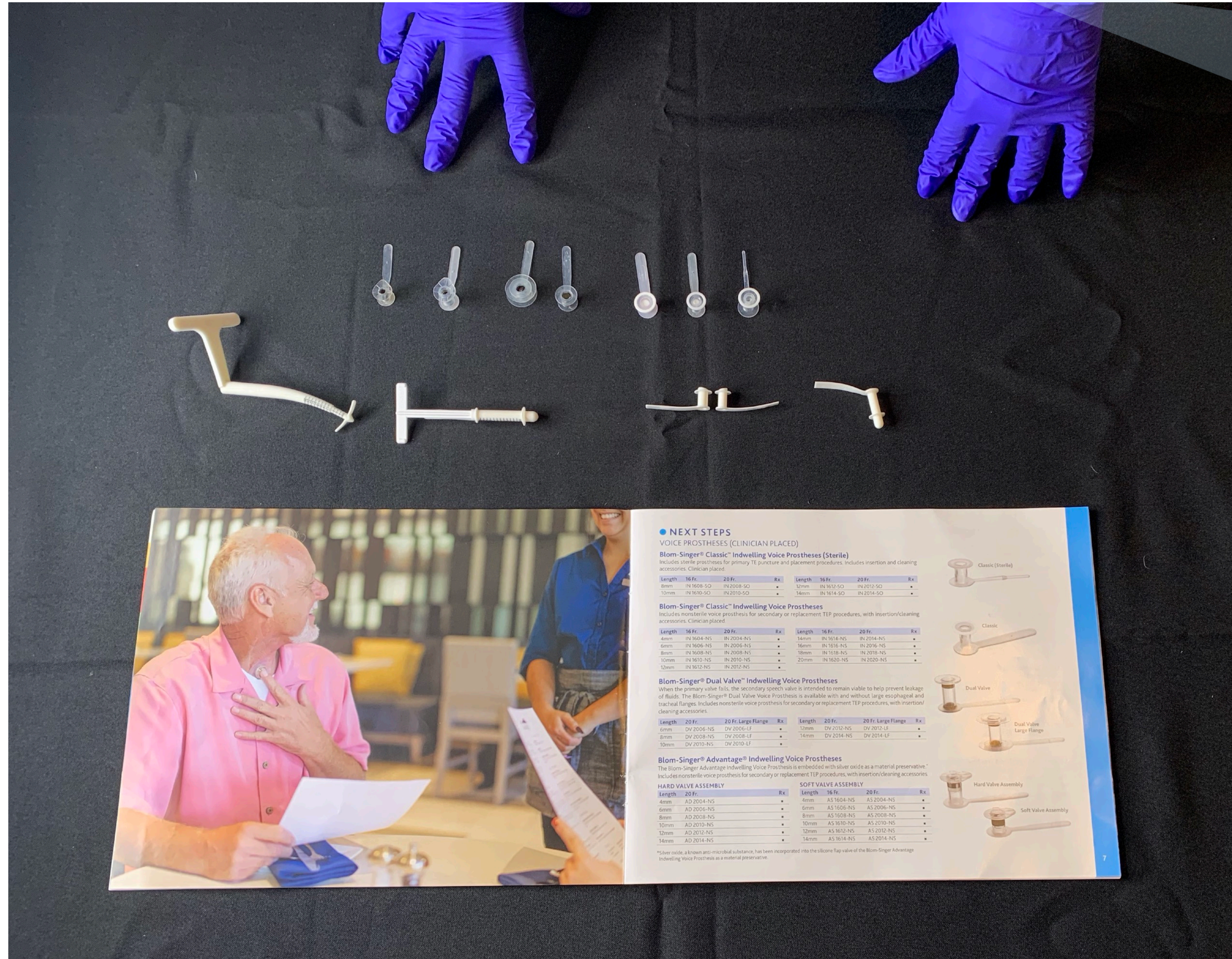
**TECHSALUD**

CALIDAD DE VIDA Y VANGUARDIA

# PRODUCTOS BLOM-SINGER PARA CABEZA Y CUELLO OTORRINOLARINGOLOGÍA



Prótesis de voz



**• NEXT STEPS**  
VOICE PROSTHESES (CLINICIAN PLACED)

**Blom-Singer® Classic™ Indwelling Voice Prostheses (Sterile)**  
Includes sterile prostheses for primary TE puncture and placement procedures. Includes insertion and cleaning accessories. Clinician placed.

Length	16 Fr.	20 Fr.	Rx	Length	16 Fr.	20 Fr.	Rx
4mm	IN 1608-SO	IN 2008-SO	•	12mm	IN 1612-SO	IN 2012-SO	•
10mm	IN 1610-SO	IN 2010-SO	•	14mm	IN 1614-SO	IN 2014-SO	•

**Blom-Singer® Classic™ Indwelling Voice Prostheses**  
Includes nonsterile voice prosthesis for secondary or replacement TEP procedures, with insertion/cleaning accessories. Clinician placed.

Length	16 Fr.	20 Fr.	Rx	Length	16 Fr.	20 Fr.	Rx
4mm	IN 1604-NS	IN 2004-NS	•	14mm	IN 1614-NS	IN 2014-NS	•
6mm	IN 1606-NS	IN 2006-NS	•	16mm	IN 1616-NS	IN 2016-NS	•
8mm	IN 1608-NS	IN 2008-NS	•	18mm	IN 1618-NS	IN 2018-NS	•
10mm	IN 1610-NS	IN 2010-NS	•	20mm	IN 1620-NS	IN 2020-NS	•
12mm	IN 1612-NS	IN 2012-NS	•				

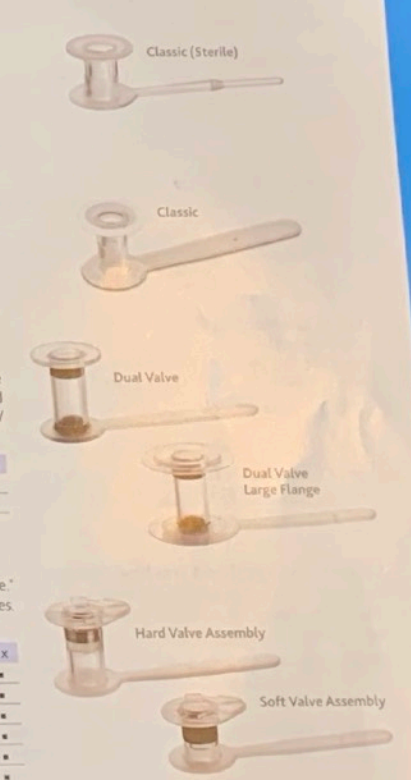
**Blom-Singer® Dual Valve™ Indwelling Voice Prostheses**  
When the primary valve fails, the secondary speech valve is intended to remain viable to help prevent leakage of fluids. The Blom-Singer® Dual Valve Voice Prosthesis is available with and without large esophageal and tracheal flanges. Includes nonsterile voice prosthesis for secondary or replacement TEP procedures, with insertion/cleaning accessories.

Length	20 Fr.	20 Fr. Large Flange	Rx	Length	20 Fr.	20 Fr. Large Flange	Rx
6mm	DV 2006-NS	DV 2006-LF	•	12mm	DV 2012-NS	DV 2012-LF	•
8mm	DV 2008-NS	DV 2008-LF	•	14mm	DV 2014-NS	DV 2014-LF	•
10mm	DV 2010-NS	DV 2010-LF	•				

**Blom-Singer® Advantage® Indwelling Voice Prostheses**  
The Blom-Singer Advantage Indwelling Voice Prosthesis is embedded with silver oxide as a material preservative.\* Includes nonsterile voice prosthesis for secondary or replacement TEP procedures, with insertion/cleaning accessories.

HARD VALVE ASSEMBLY			SOFT VALVE ASSEMBLY			
Length	20 Fr.	Rx	Length	16 Fr.	20 Fr.	Rx
4mm	AD 2004-NS	•	4mm	AS 1604-NS	AS 2004-NS	•
6mm	AD 2006-NS	•	6mm	AS 1606-NS	AS 2006-NS	•
8mm	AD 2008-NS	•	8mm	AS 1608-NS	AS 2008-NS	•
10mm	AD 2010-NS	•	10mm	AS 1610-NS	AS 2010-NS	•
12mm	AD 2012-NS	•	12mm	AS 1612-NS	AS 2012-NS	•
14mm	AD 2014-NS	•	14mm	AS 1614-NS	AS 2014-NS	•

\*Silver oxide, a known anti-microbial substance, has been incorporated into the silicone flap valve of the Blom-Singer Advantage Indwelling Voice Prosthesis as a material preservative.



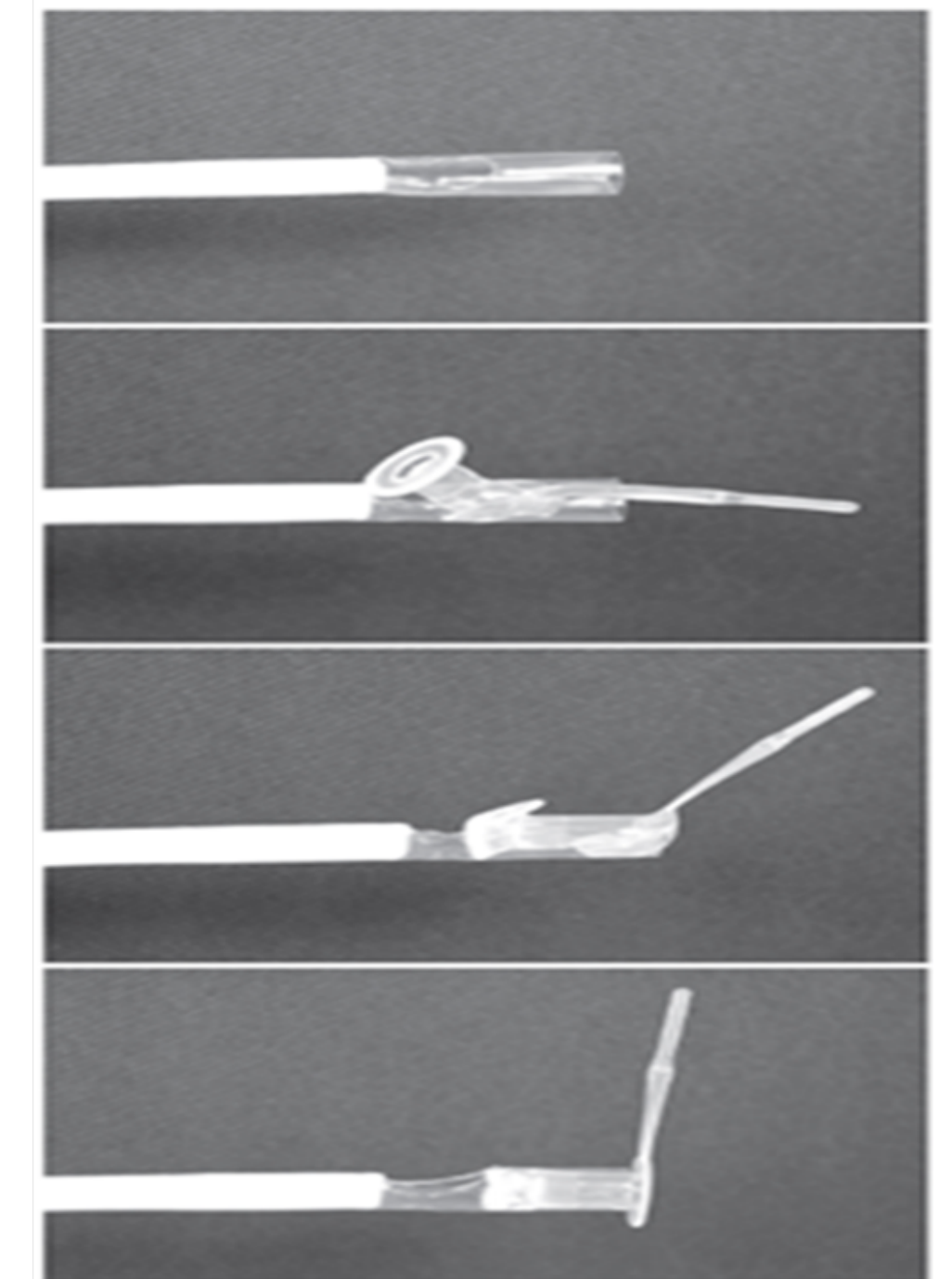
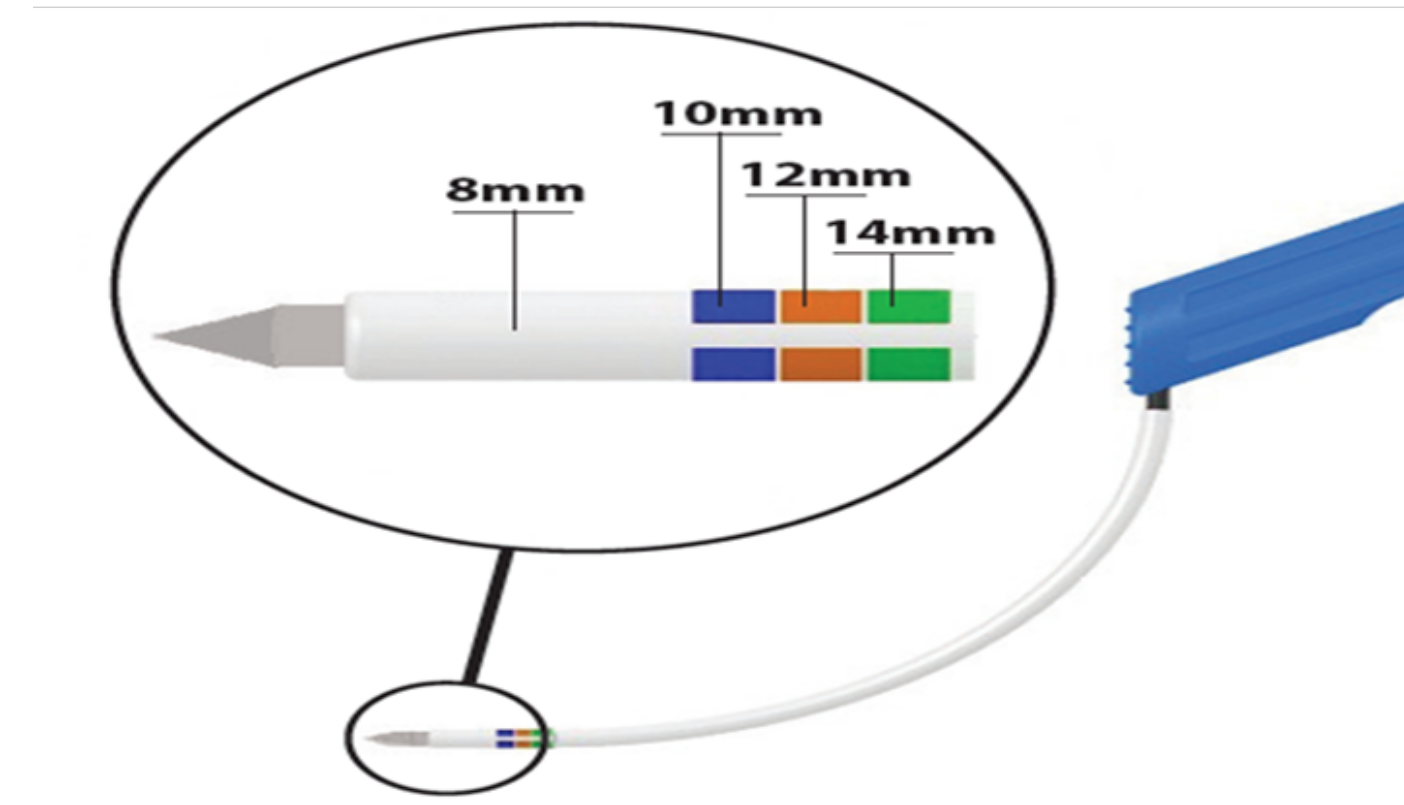
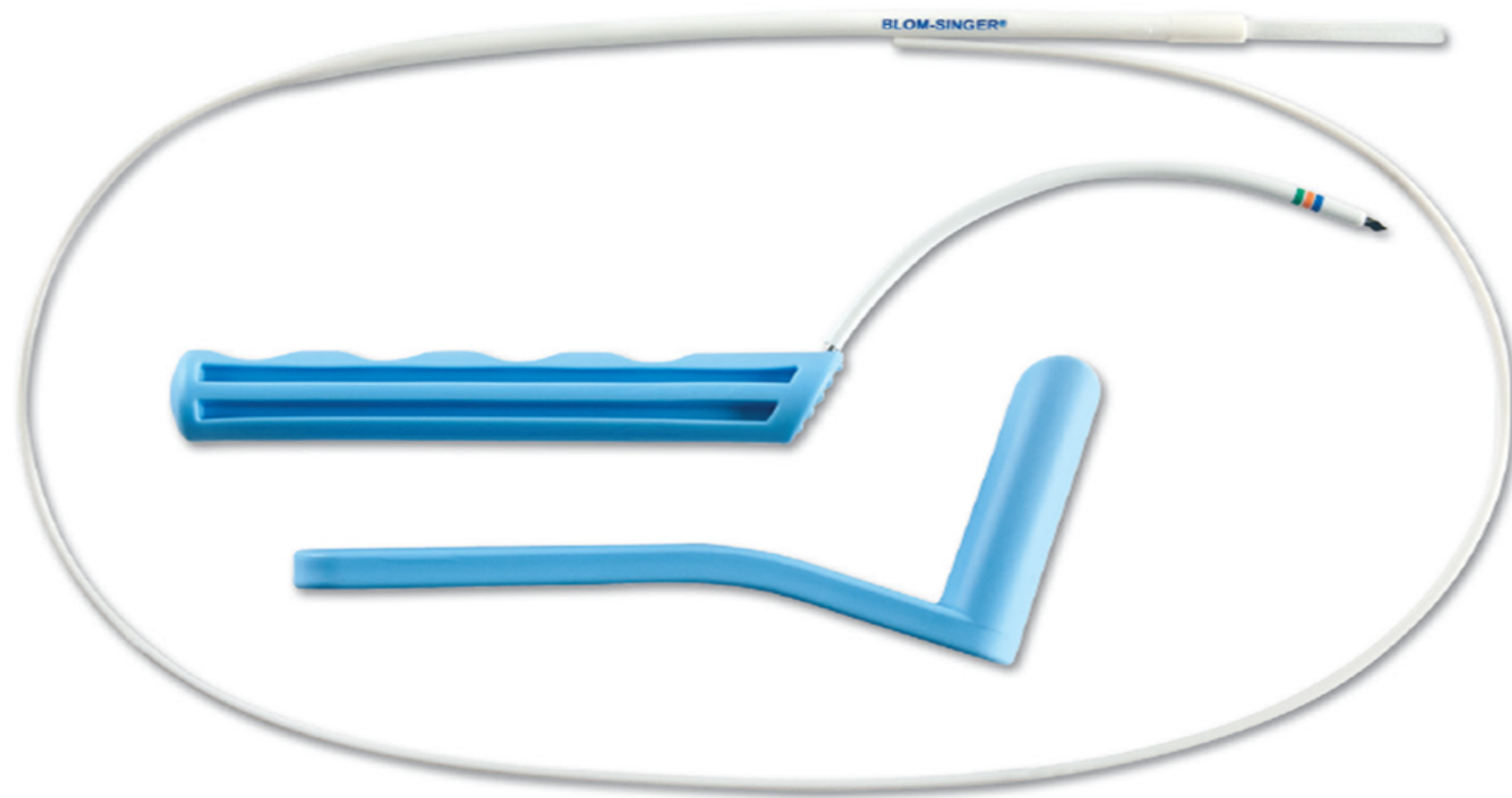
7



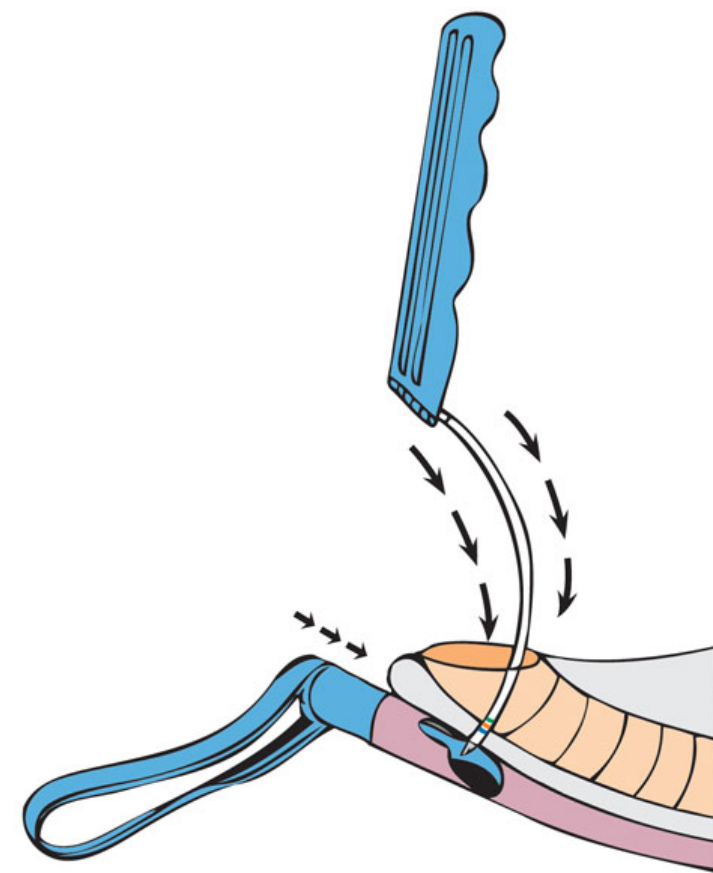
Punción traqueoesofágica

# Colocación primaria

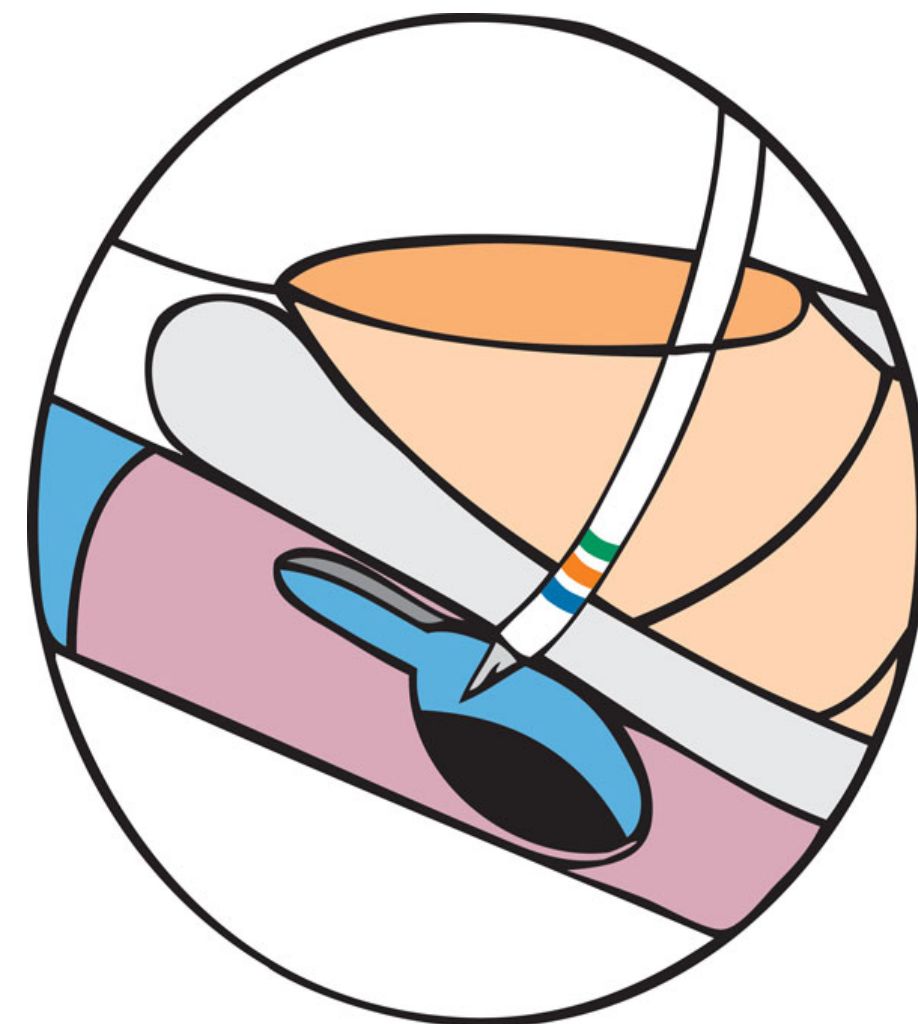
## Kit quirúrgico de InHealth/Blom-Singer



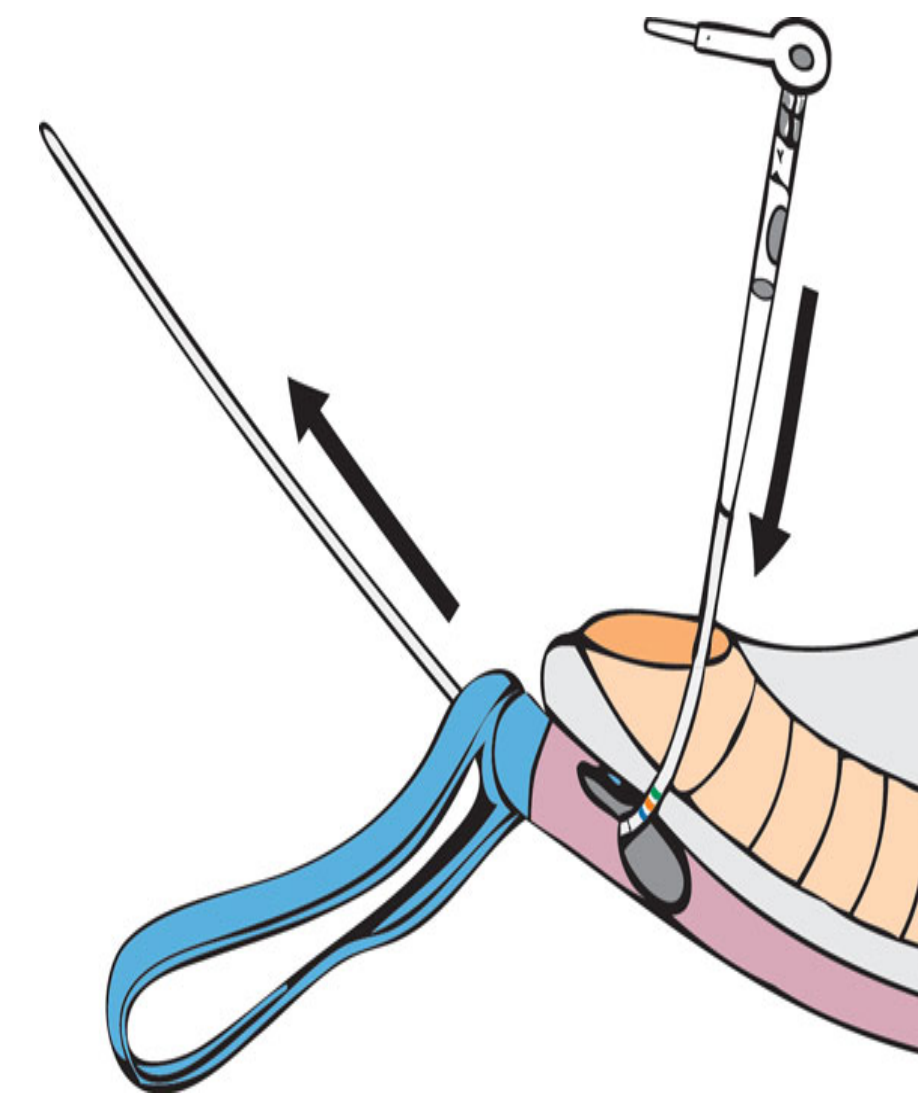
# Punción primaria



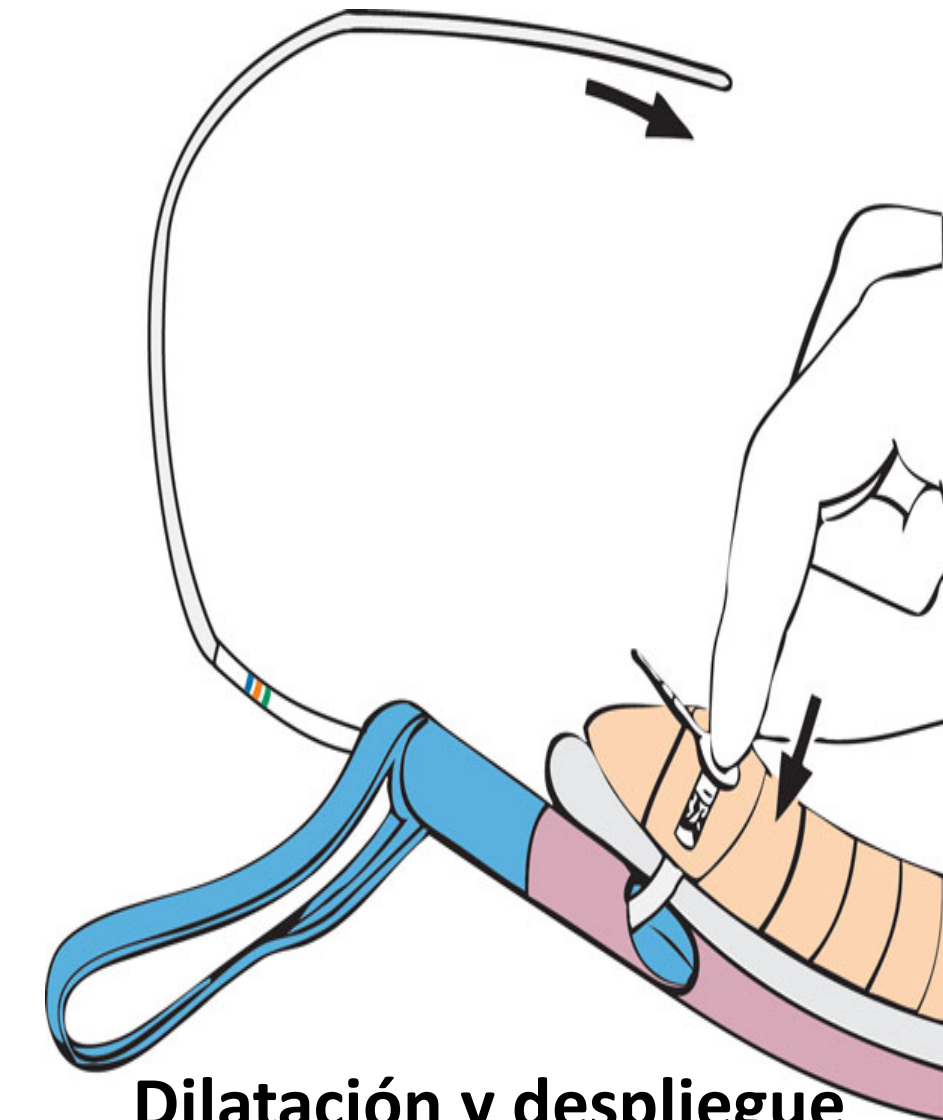
**Punción**



**Medición**

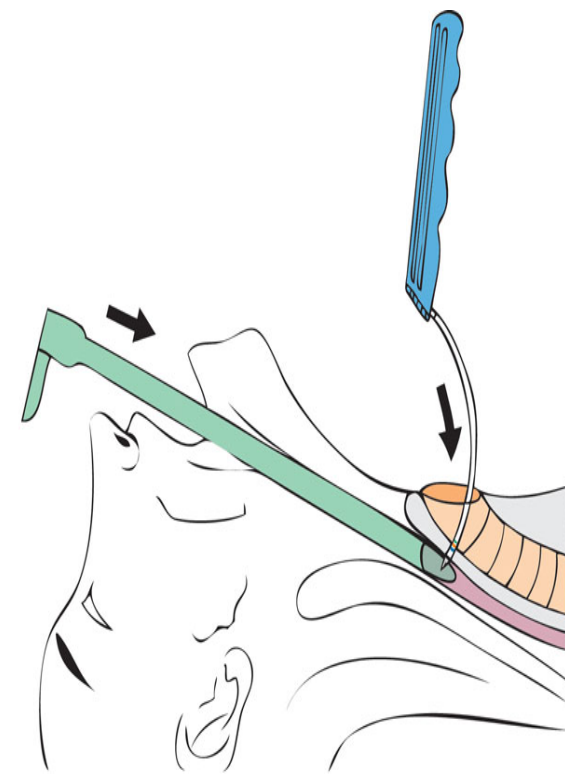


**Carga e inserción**

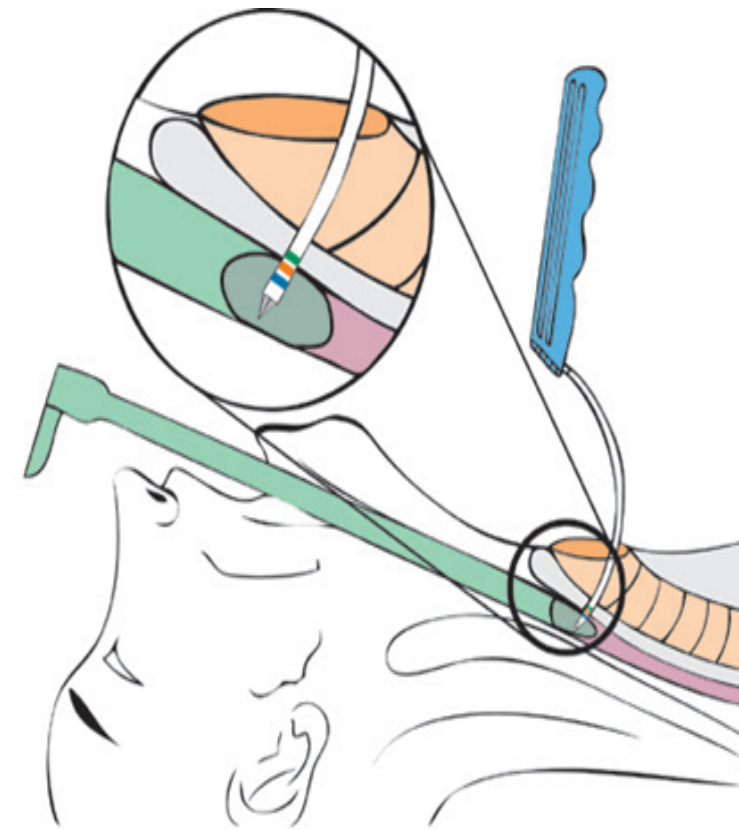


**Dilatación y despliegue**

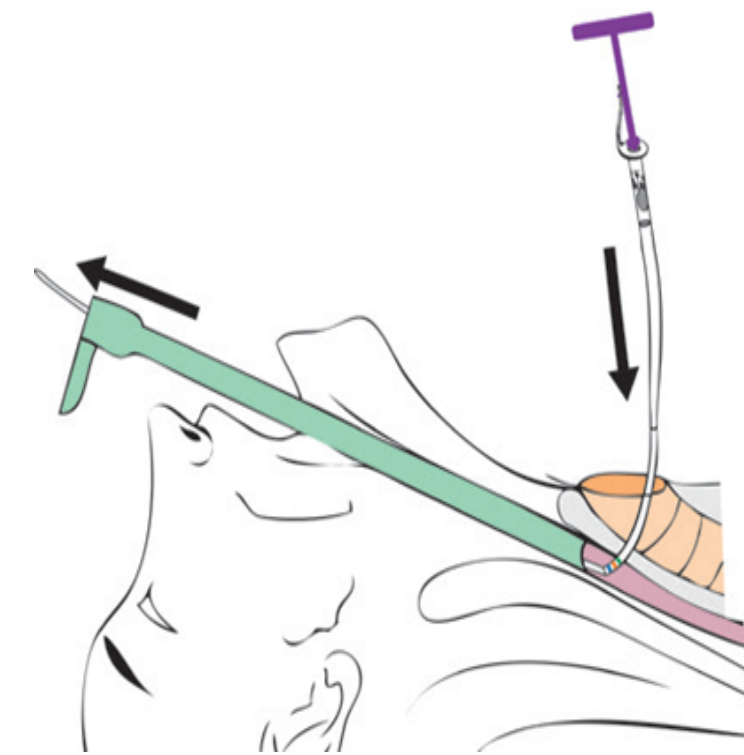
# Punción secundaria



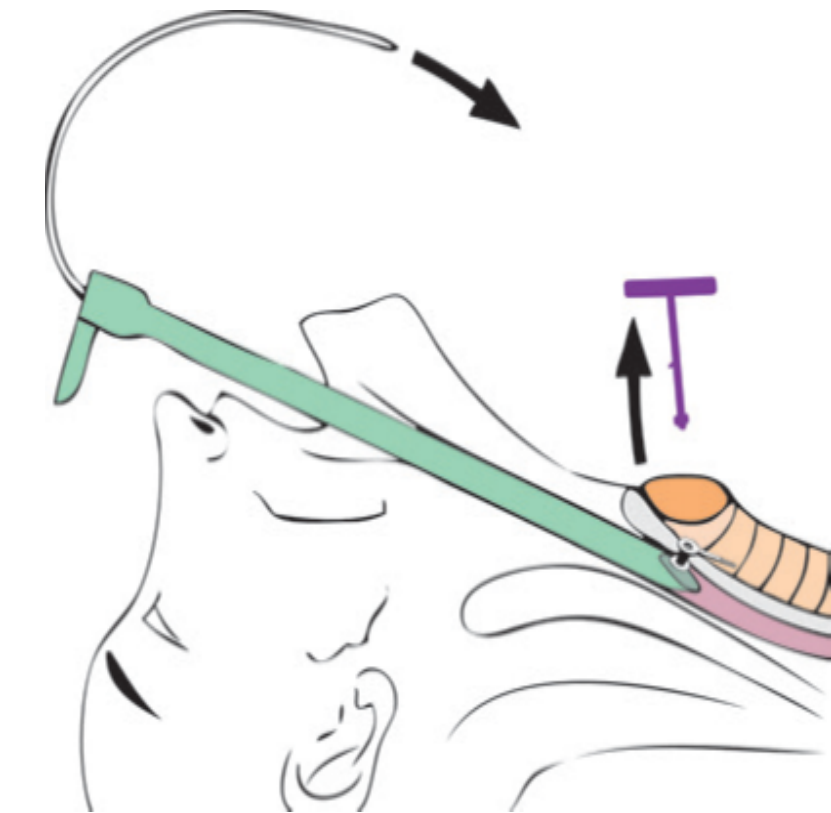
**Punción**



**Medición**



**Carga e inserción**



**Dilatación y despliegue**



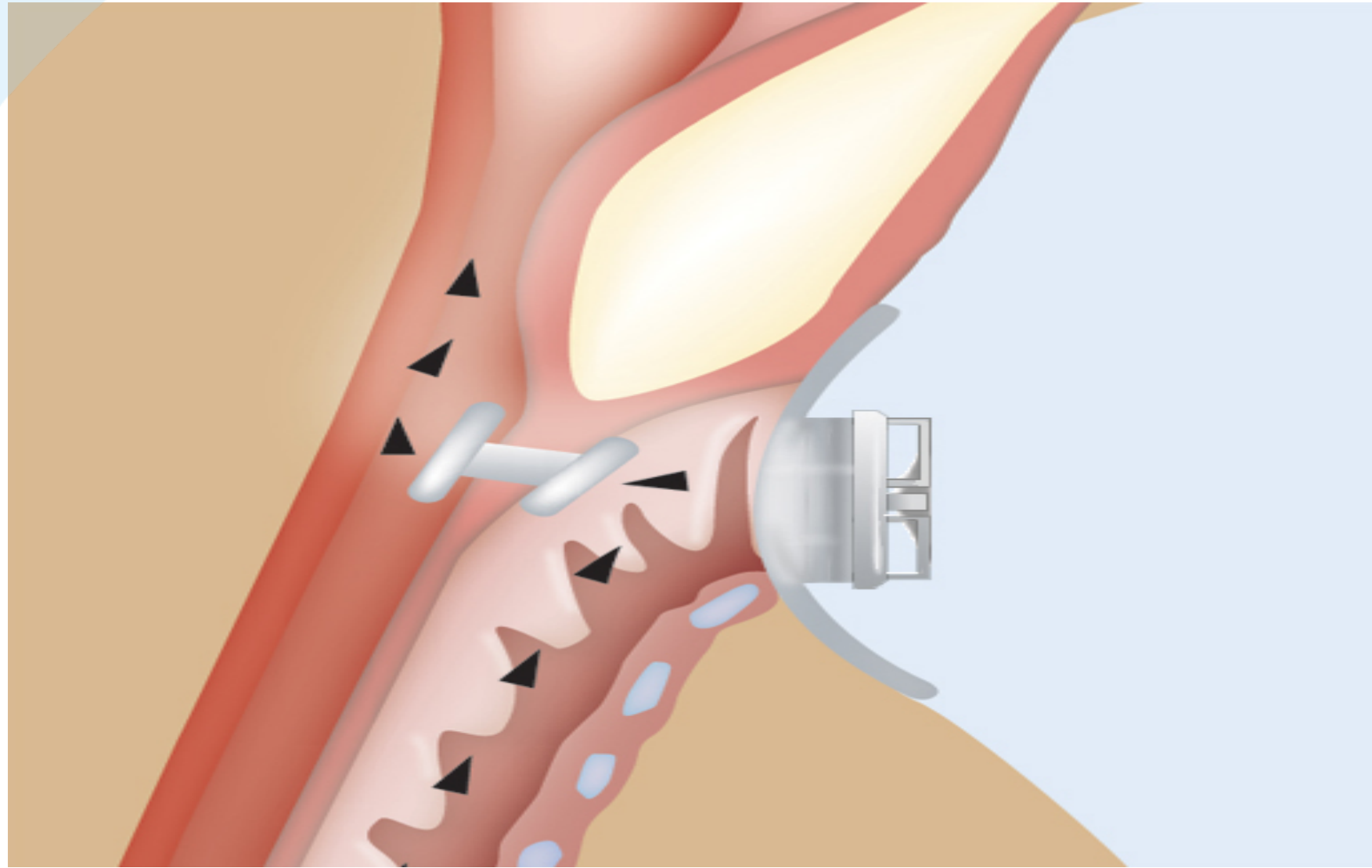


# Cánulas de laringectomía Blom-Singer®



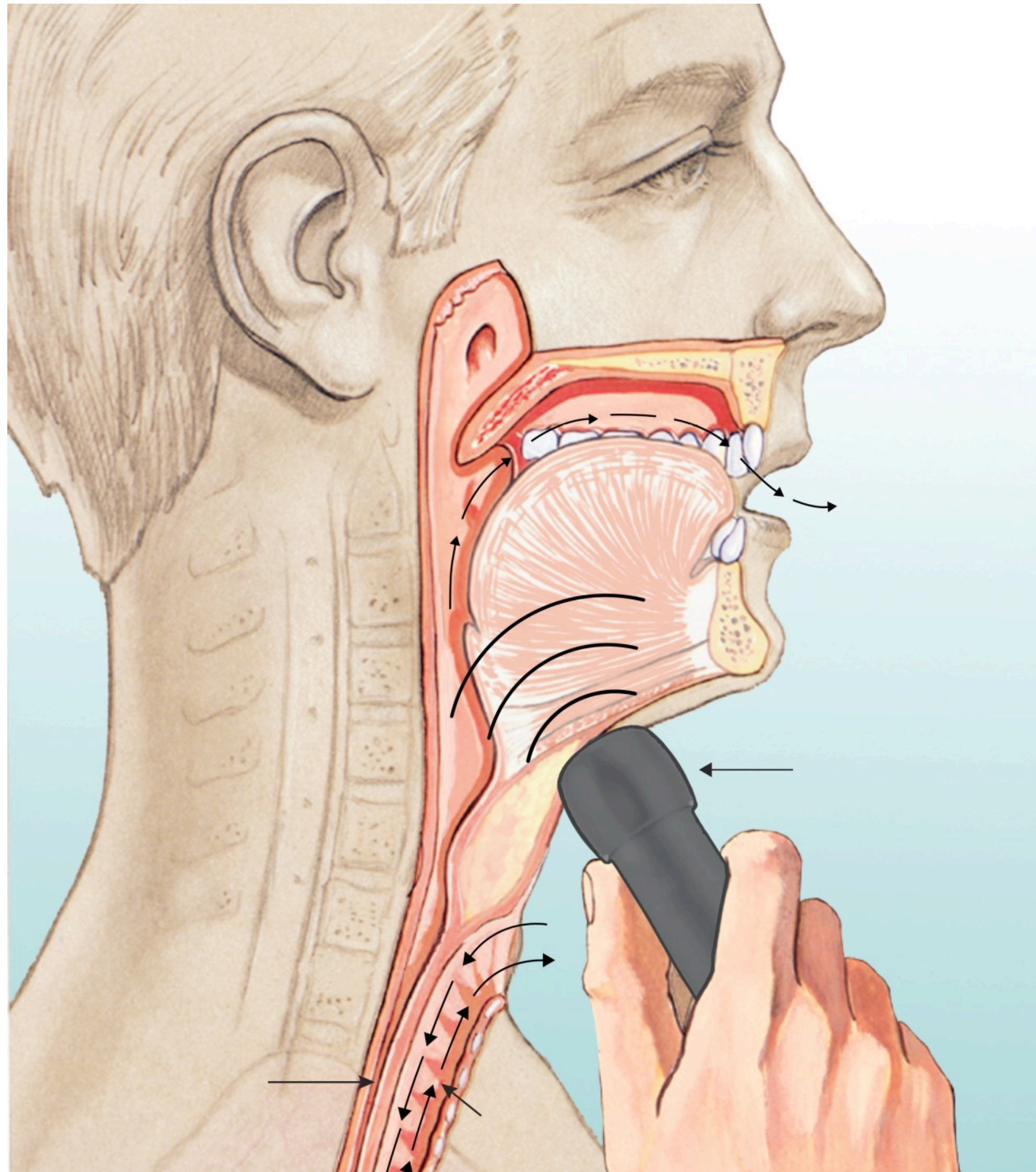


Filtro HME





Laringe electrónica Blom-Singer (EL1000)



Electrolaringe



Prótesis de fístula ajustable de dos alas Blom-Singer  
Catéter de inserción y extracción Blom-Singer

# Inserción



**25 mm**



**38 mm**



**50 mm**



Catéter de Inserción y Extracción  
Blom-Singer®

Prótesis evita el uso de la sonda gástrica / gastrectomía

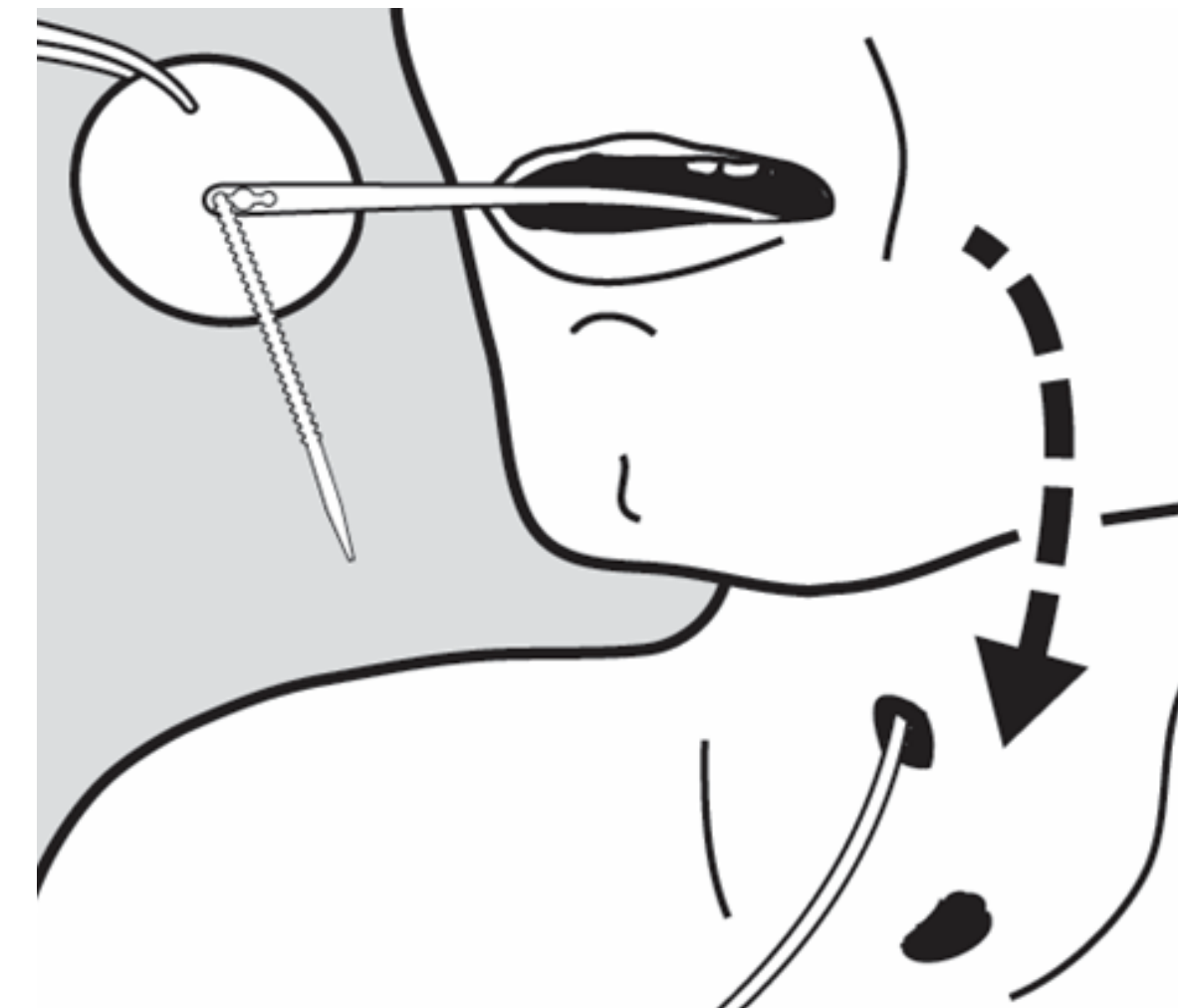
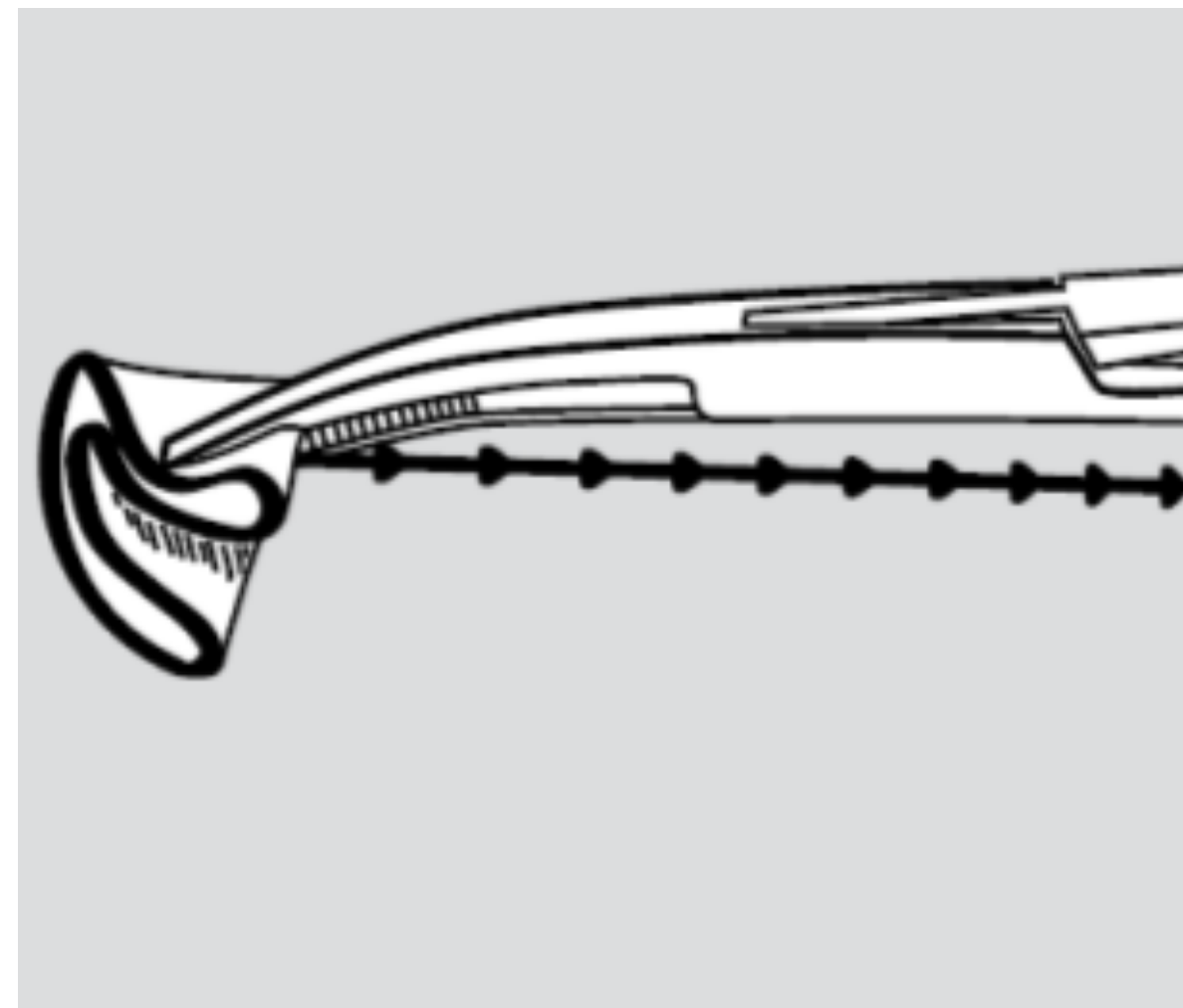


# Inserción

## 2 Métodos de Inserción

Inserción Transfístula

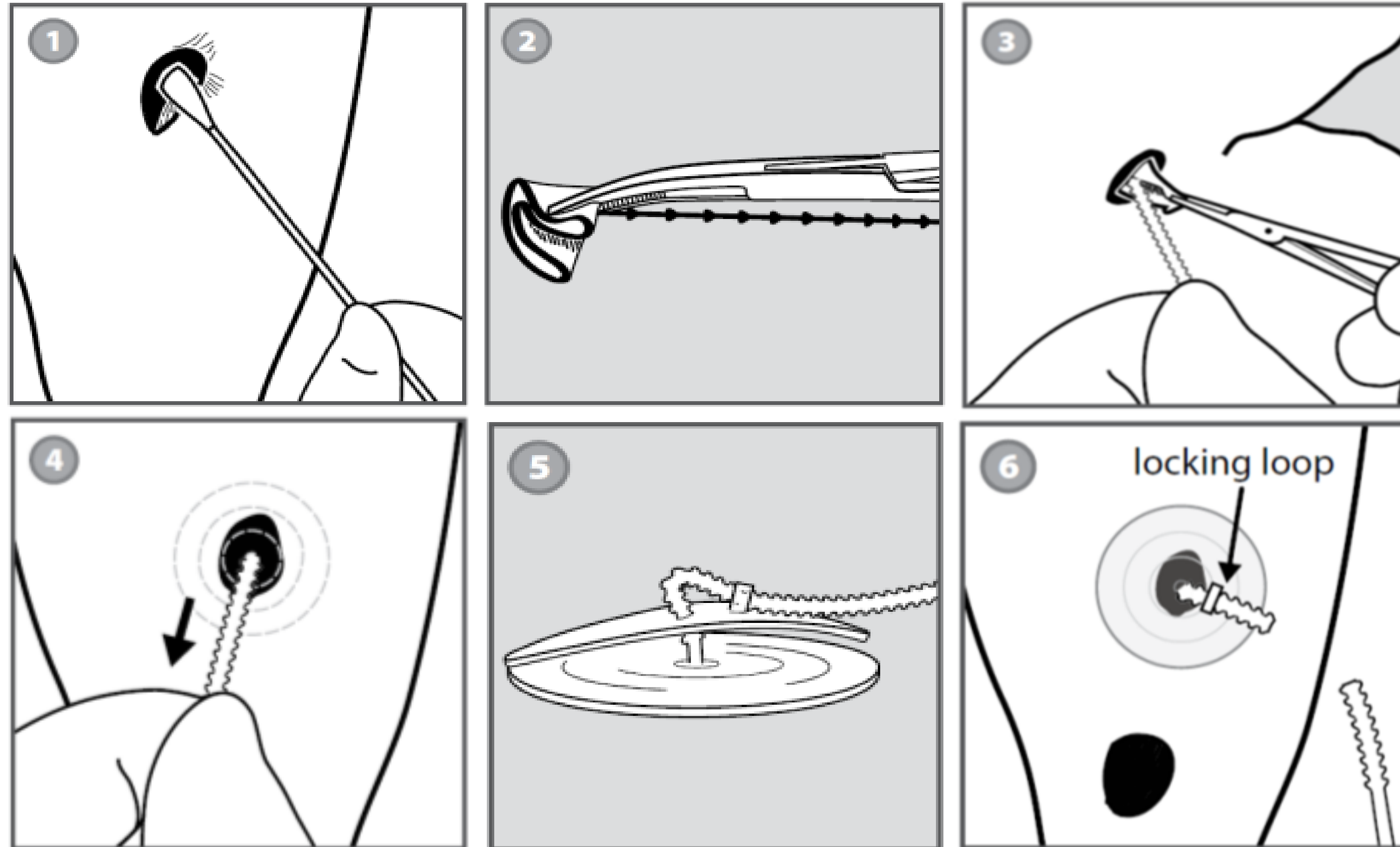
Inserción Retrógrada Transoral Usando el Catéter



Es de primordial importancia la preferencia del médico, tamaño, accesibilidad de la fístula, estado del paciente

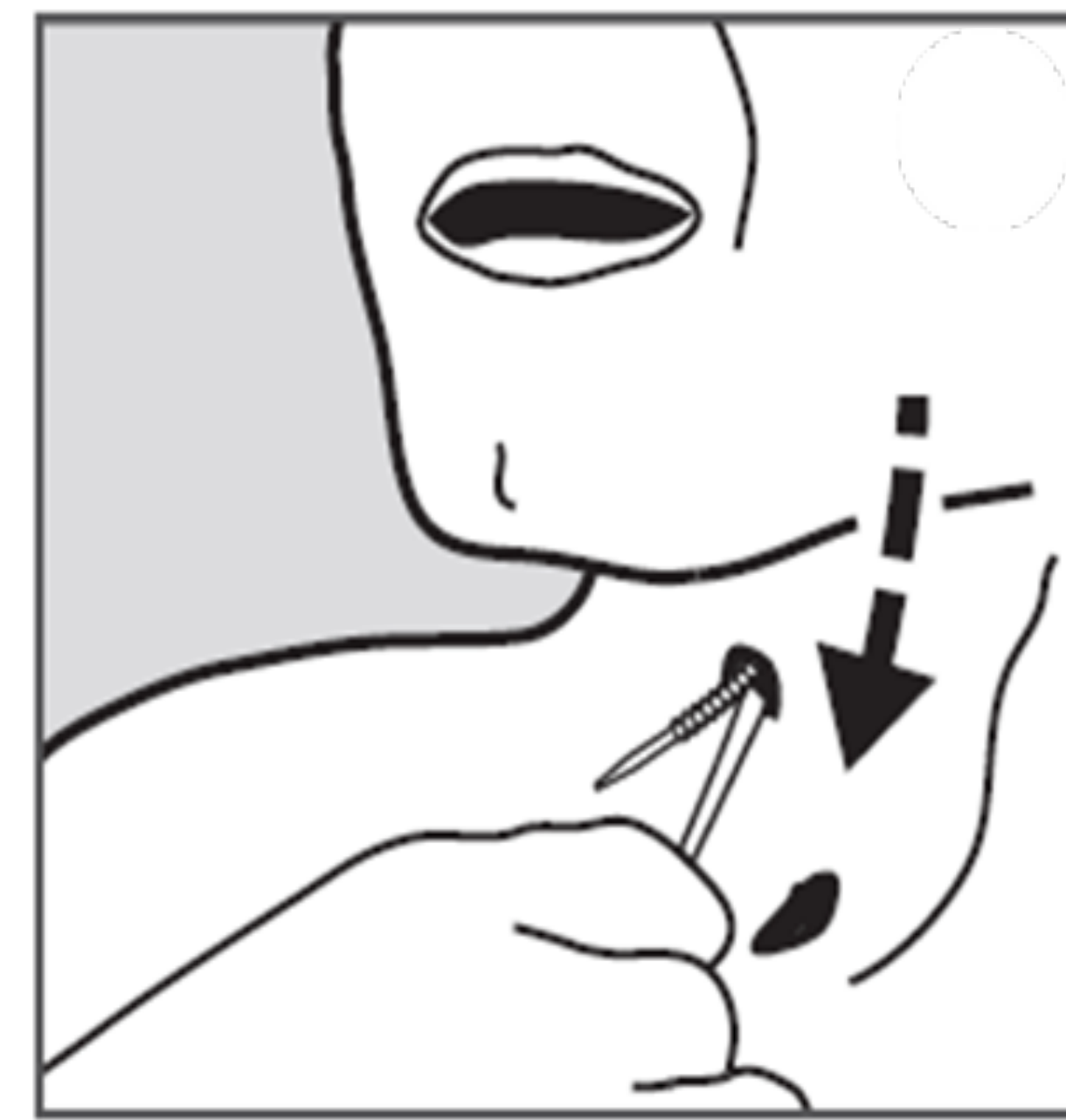
**Prótesis evita el uso de la sonda gástrica / gastrectomía**

# Inserción transfistular



Prótesis evita el uso de la sonda gástrica / gastrectomía

# Inserción retrógrada transoral

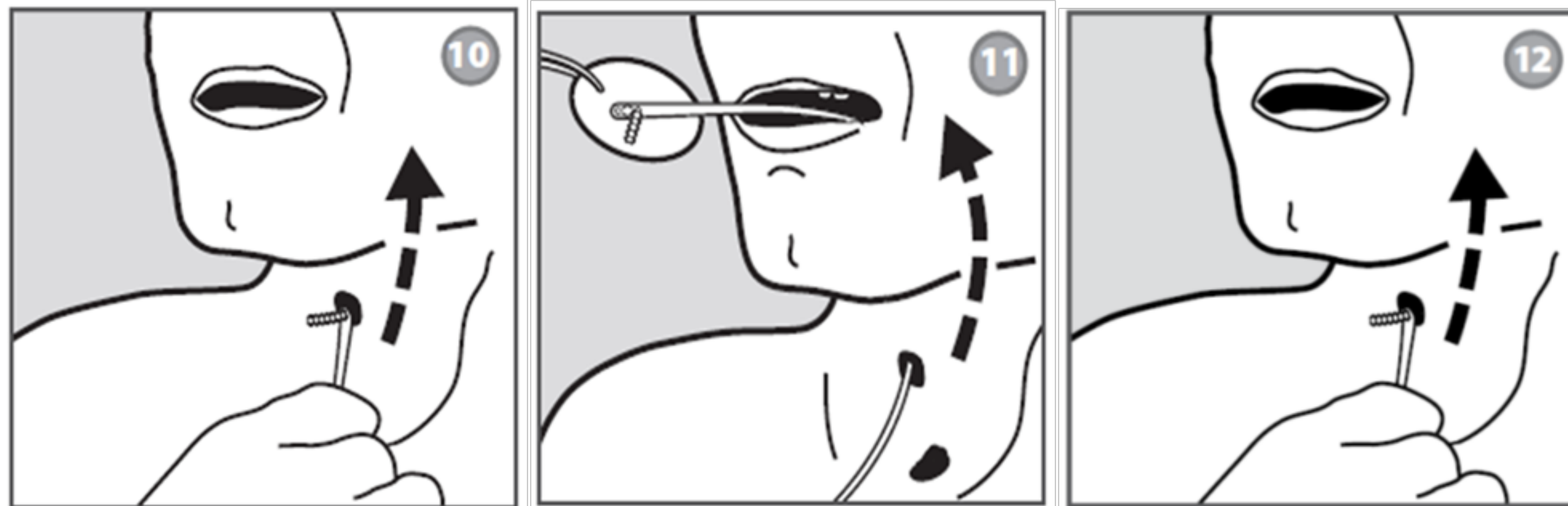


Inserción = bloquear el catéter en la posición posterior **(A)**

Desmontaje/Retiro/Extracción = bloquear el catéter en posición abajo **(B)**

Prótesis evita el uso de la sonda gástrica / gastrectomía

# Remoción anterógrada

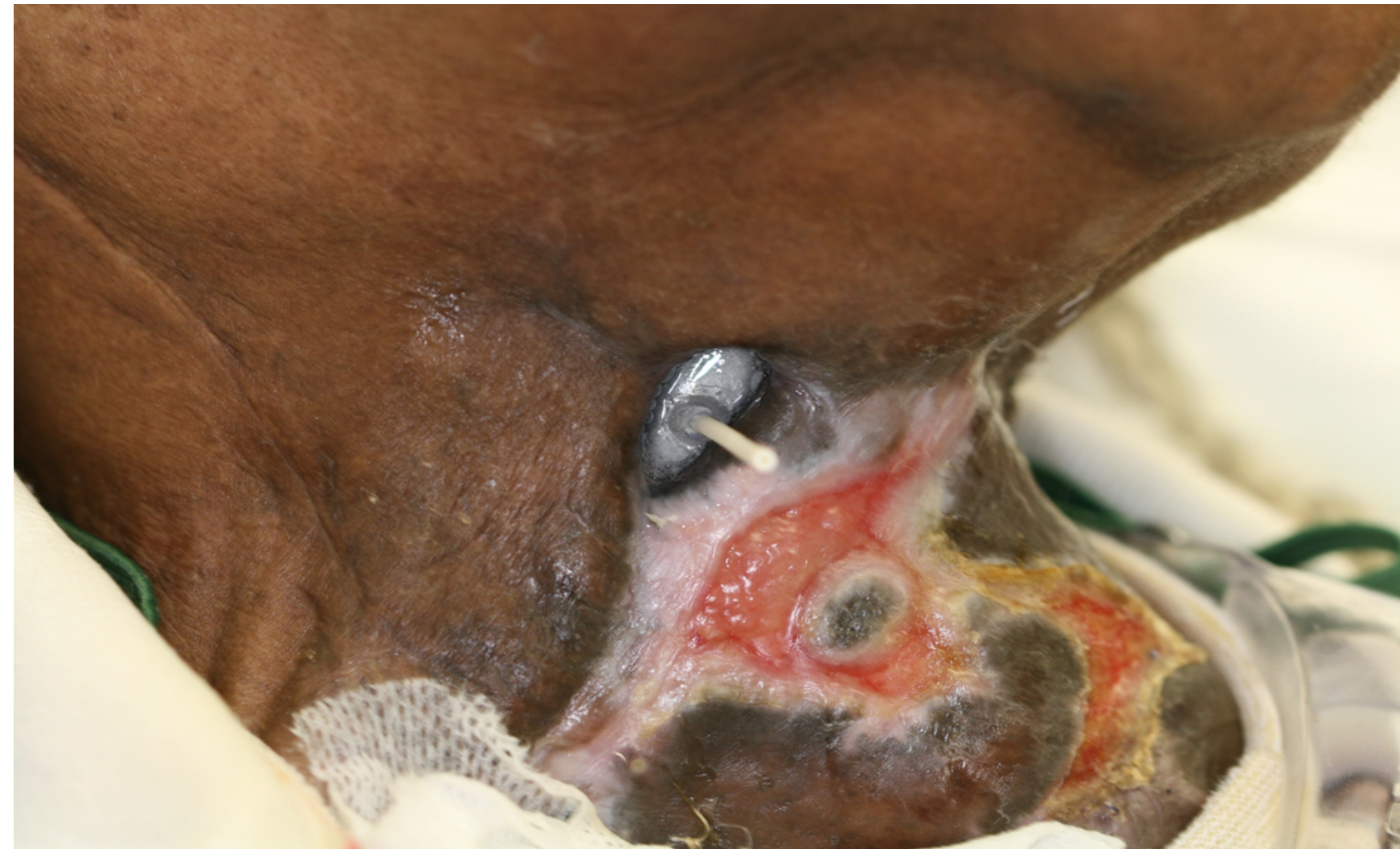


Inserción = bloquear el catéter en la posición posterior **(A)**

Desmontaje/Retiro/Extracción = bloquear el catéter en posición abajo **(B)**

Prótesis evita el uso de la sonda gástrica / gastrectomía

# Paciente - Antes

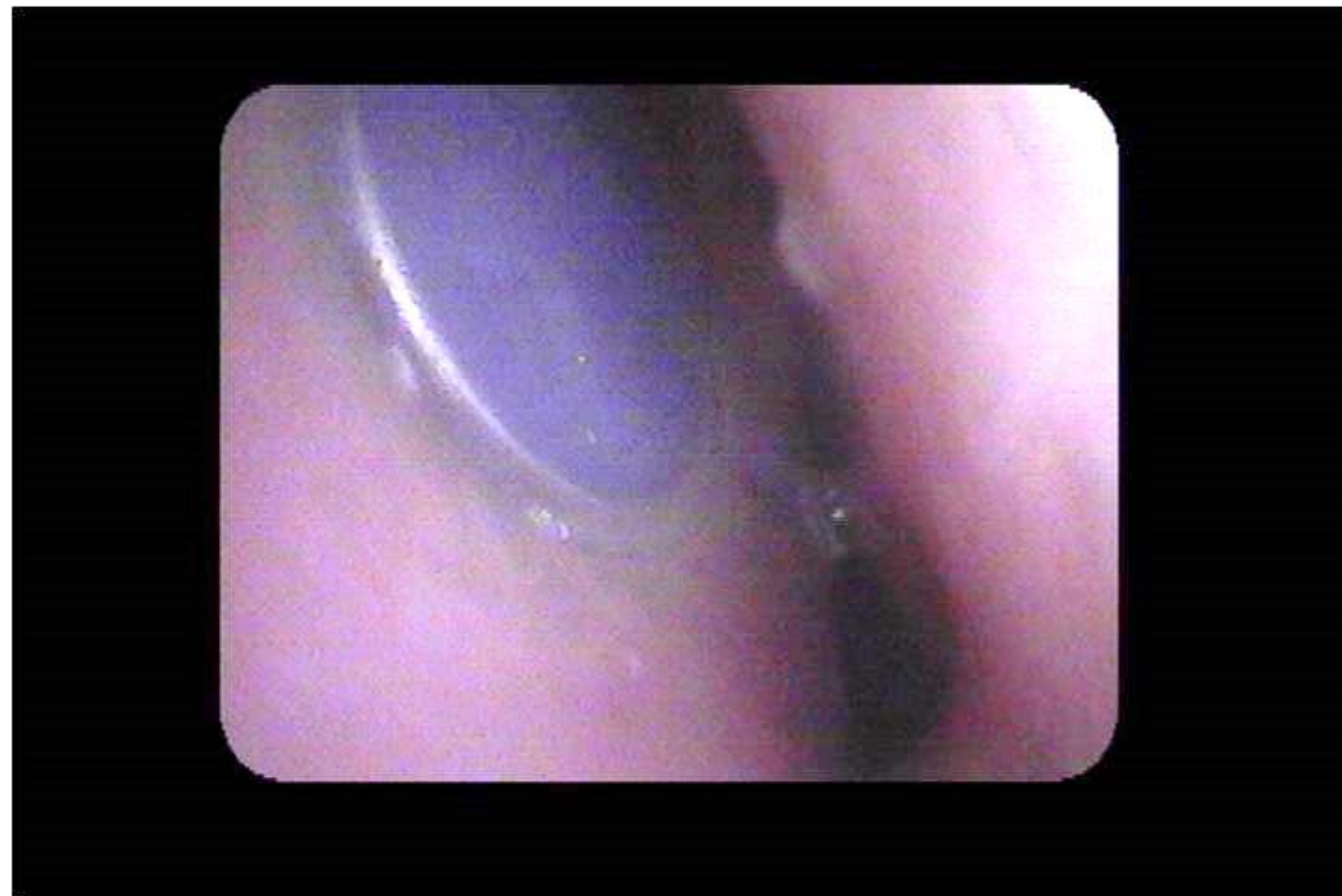


# Paciente - Después





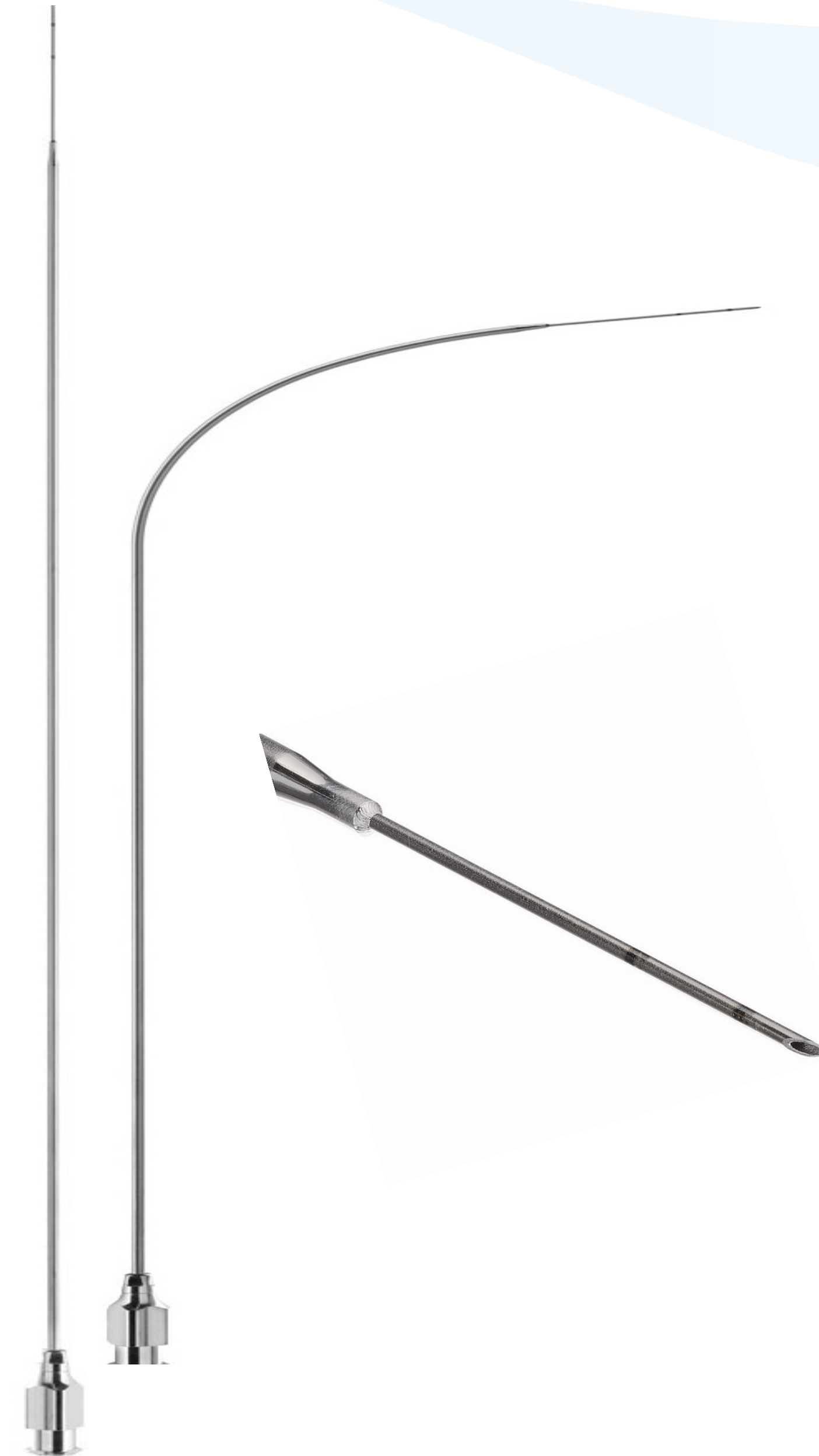
# Prótesis septal en perforación nasal

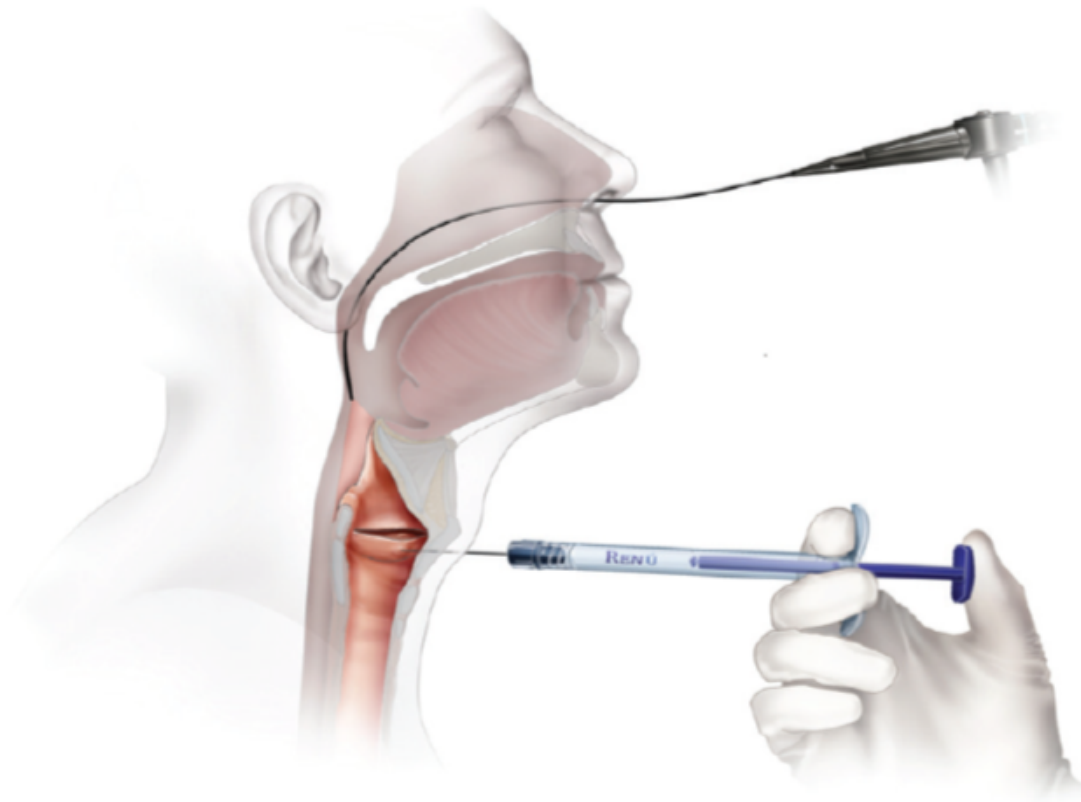




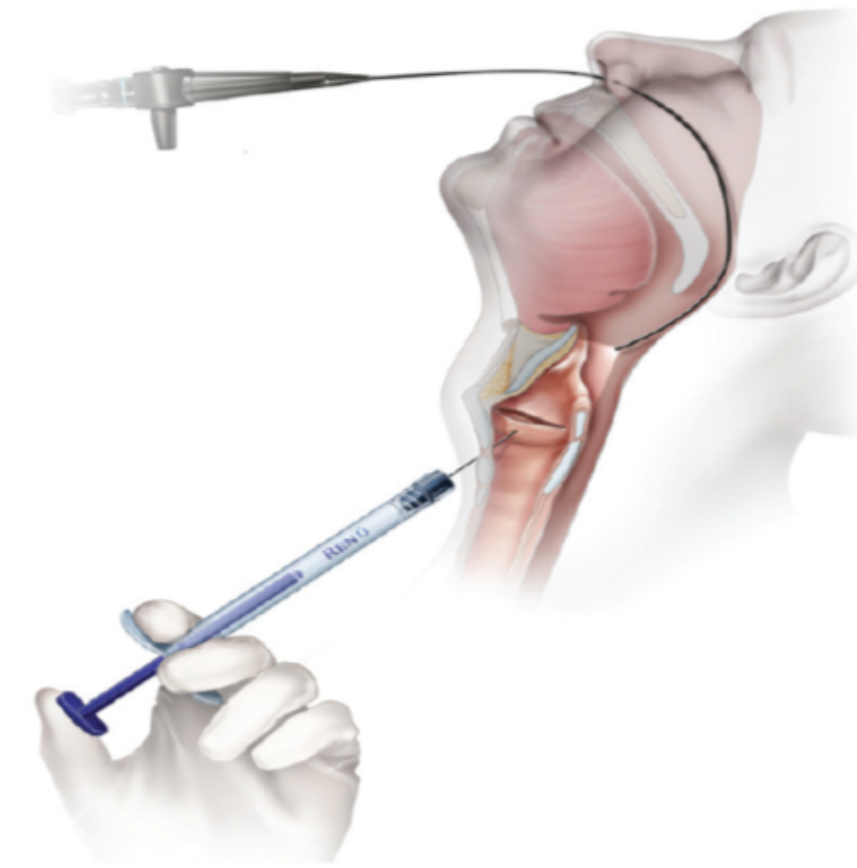


Línea Renú

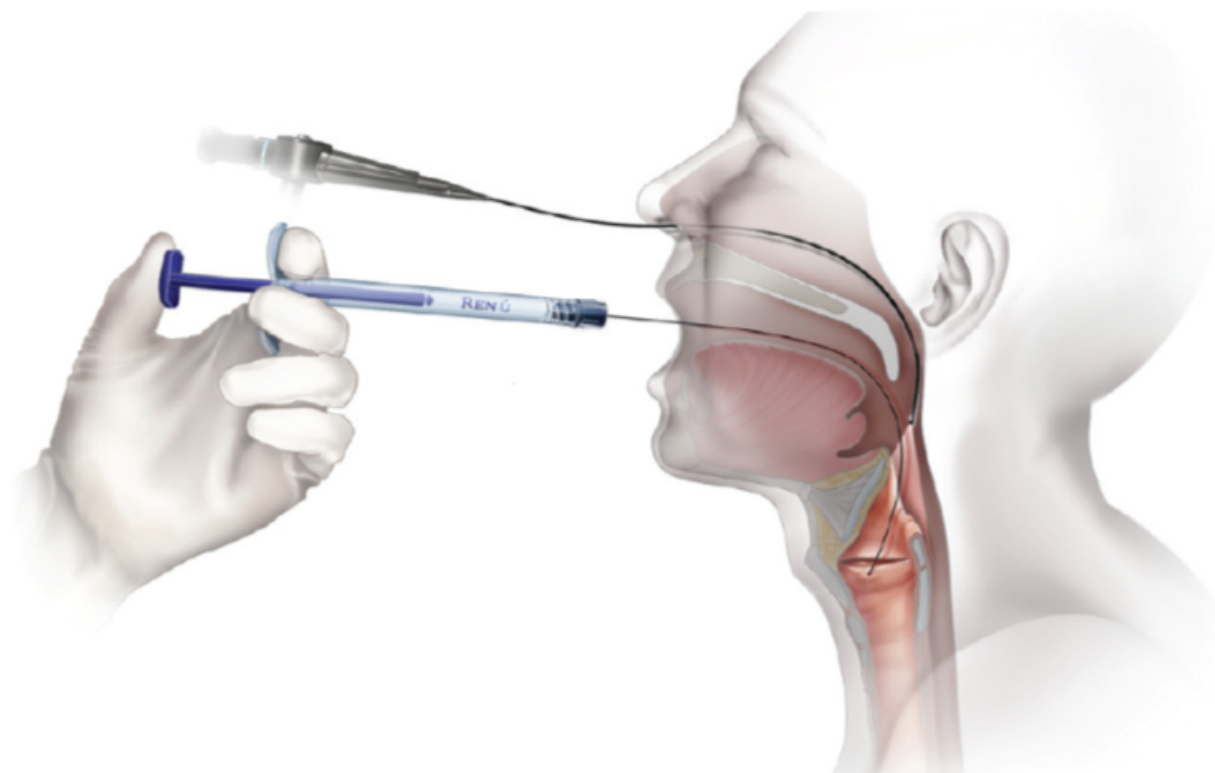




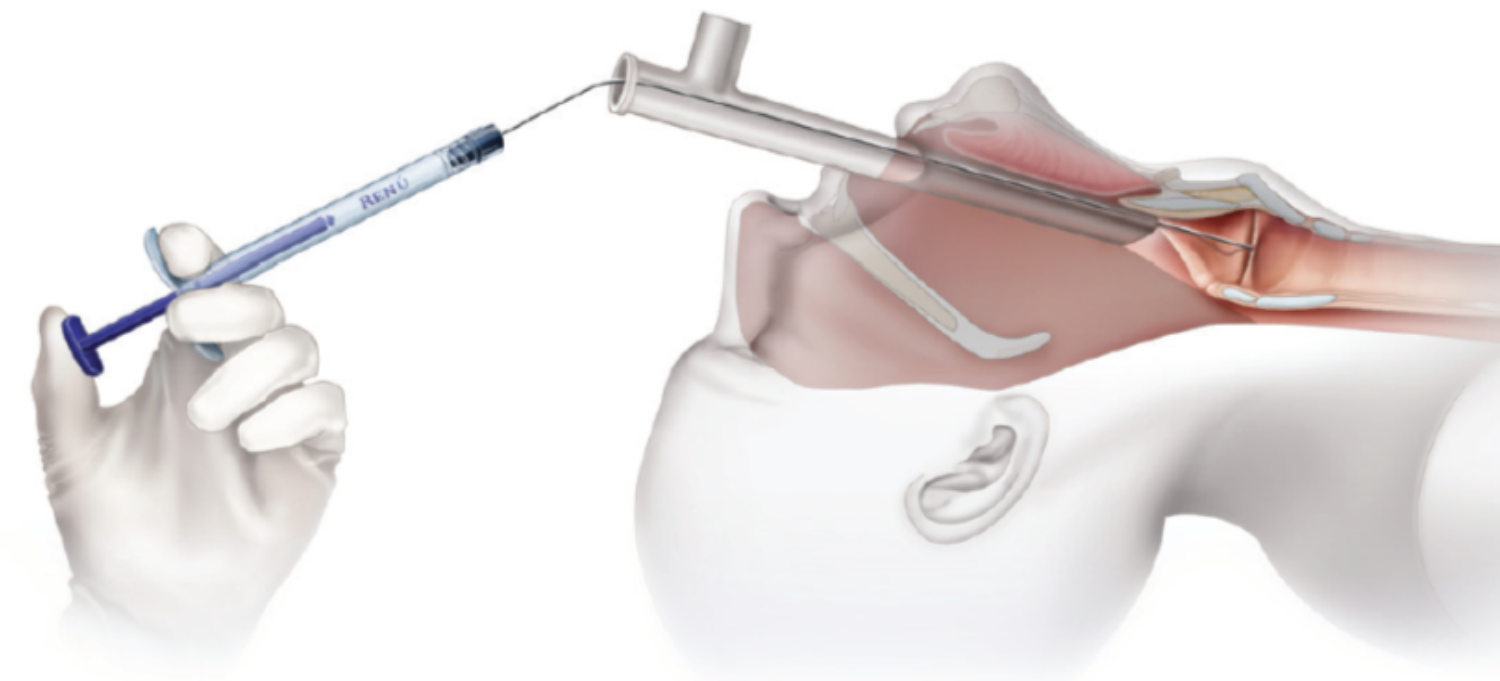
Percutáneo (en la oficina)  
El enfoque del cartílago tiroideo



Percutáneo (en la oficina)  
El enfoque del cartílago cricotiroideo



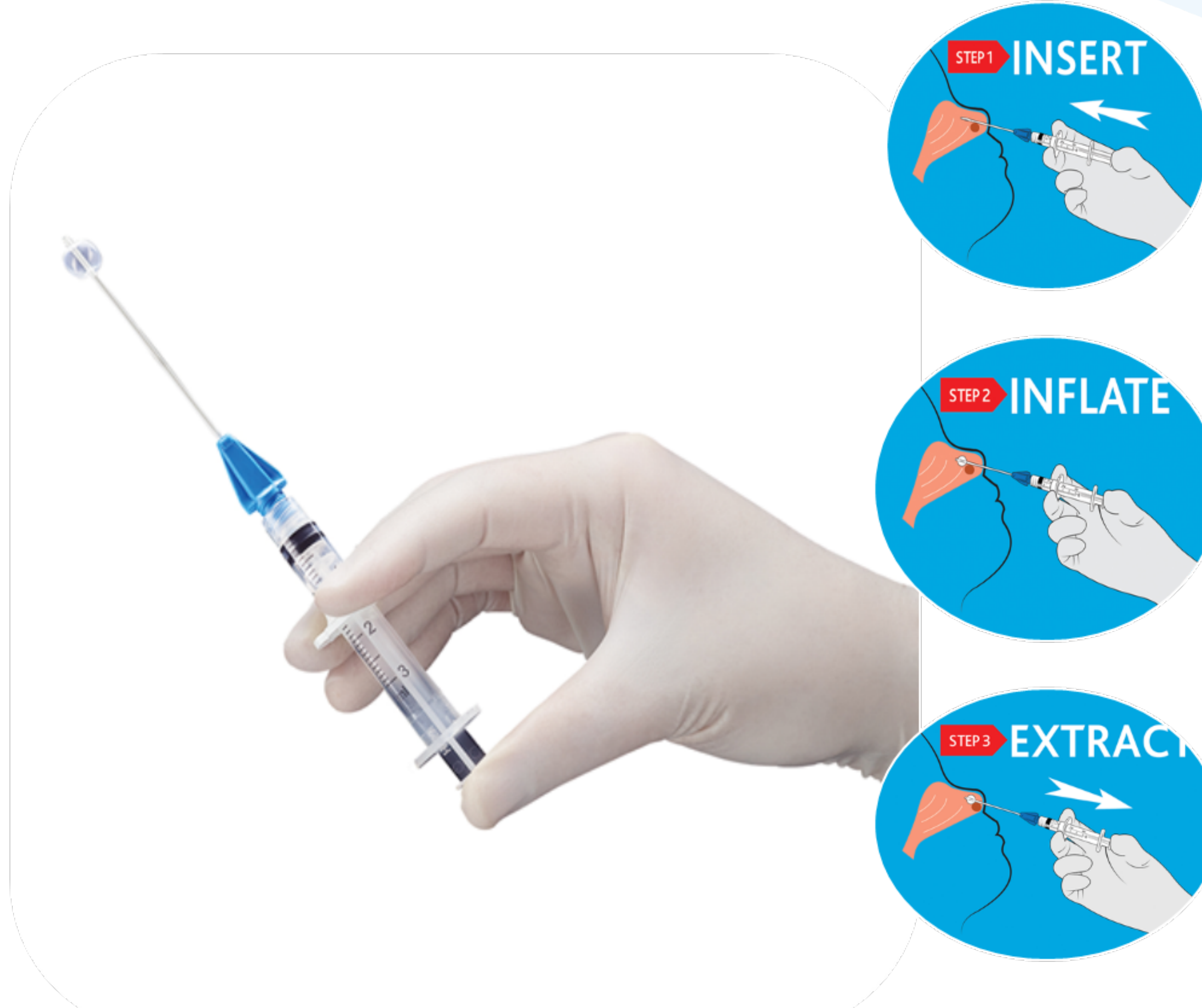
Transoral (en la oficina)



Transoral (en el quirófano)



Katz Extractor®



[www.tienda.techsalud.cl](http://www.tienda.techsalud.cl)



Buscar 

- Inicio
- Oído ▾
- Nariz ▾
- Cuello/Laringe ▾
- Desinfección
- Instrumental ▾
- Contacto



**ELECTROLARINGE**  
para pacientes privados de voz temporal o permanentemente

The banner features a blue geometric background on the left and a photograph of a man using a handheld device on his neck on the right. Navigation arrows are present on the left and right sides of the text.

## PRODUCTOS DESTACADOS





Avenida Providencia #201, Providencia, Santiago  
(+56 2) 2321 5064  
contacto@techsalud.cl  
www.techsalud.cl