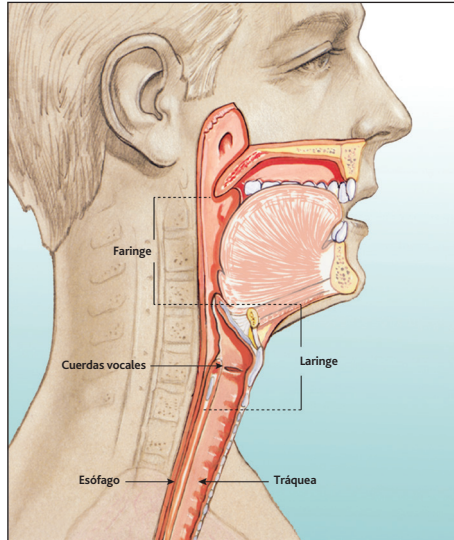


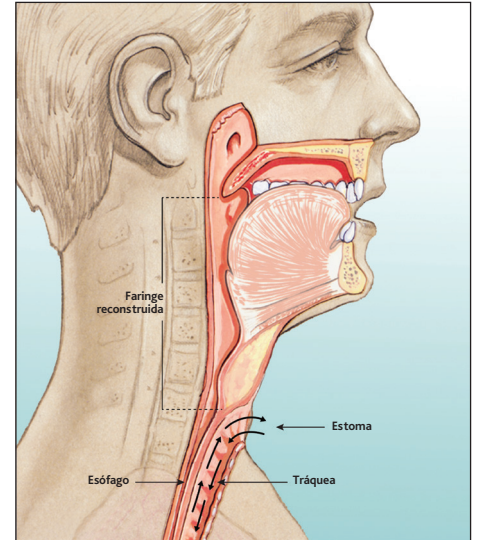
Cambios anatómicos posteriores a la laringectomía y métodos de voz

Blom-Singer®

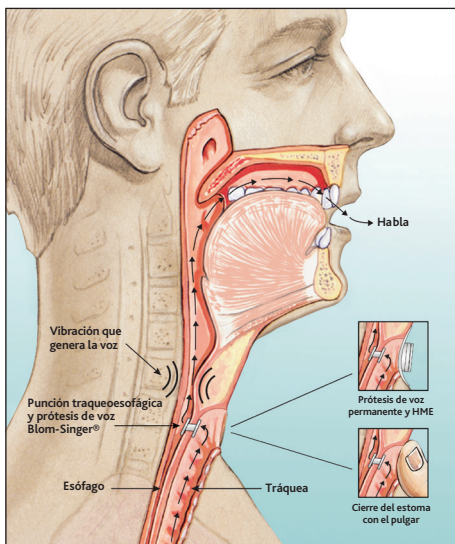
La voz de la experiencia desde 1978



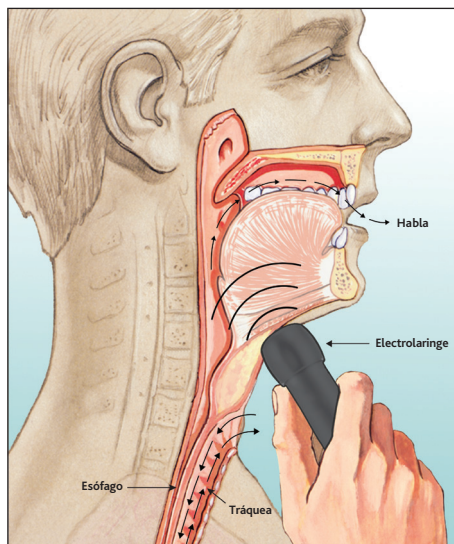
Antes de la laringectomía



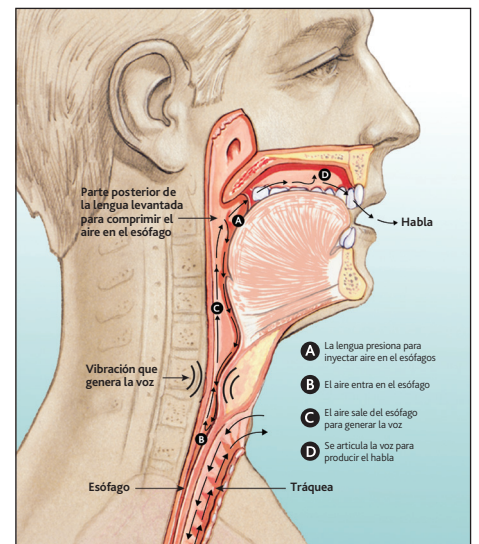
Después de la laringectomía



Prótesis de voz



Electrolaringe



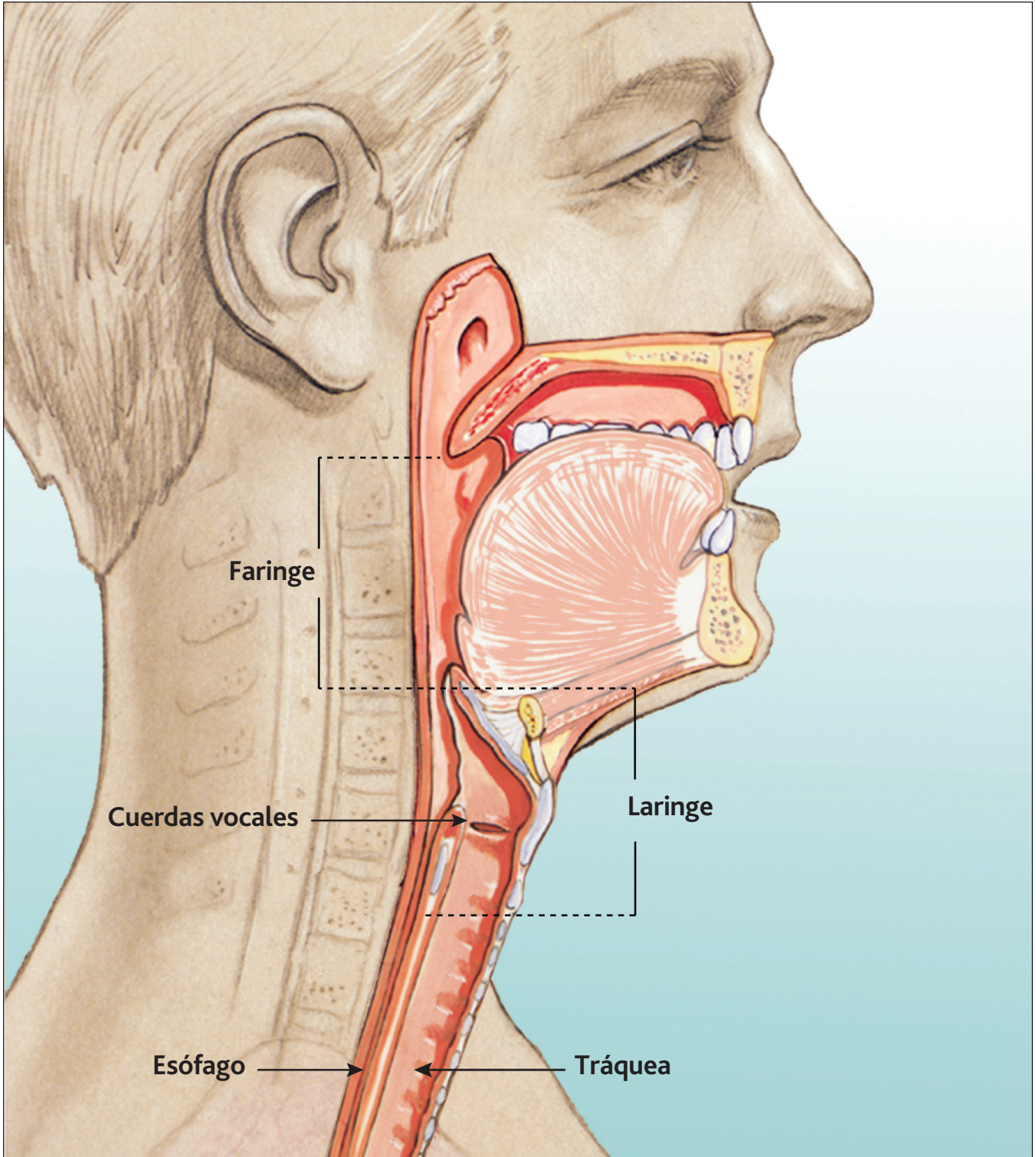
Habla esofágica

INHEALTH®
TECHNOLOGIES

We speak ENT

www.inhealth.com

Antes de la laringectomía

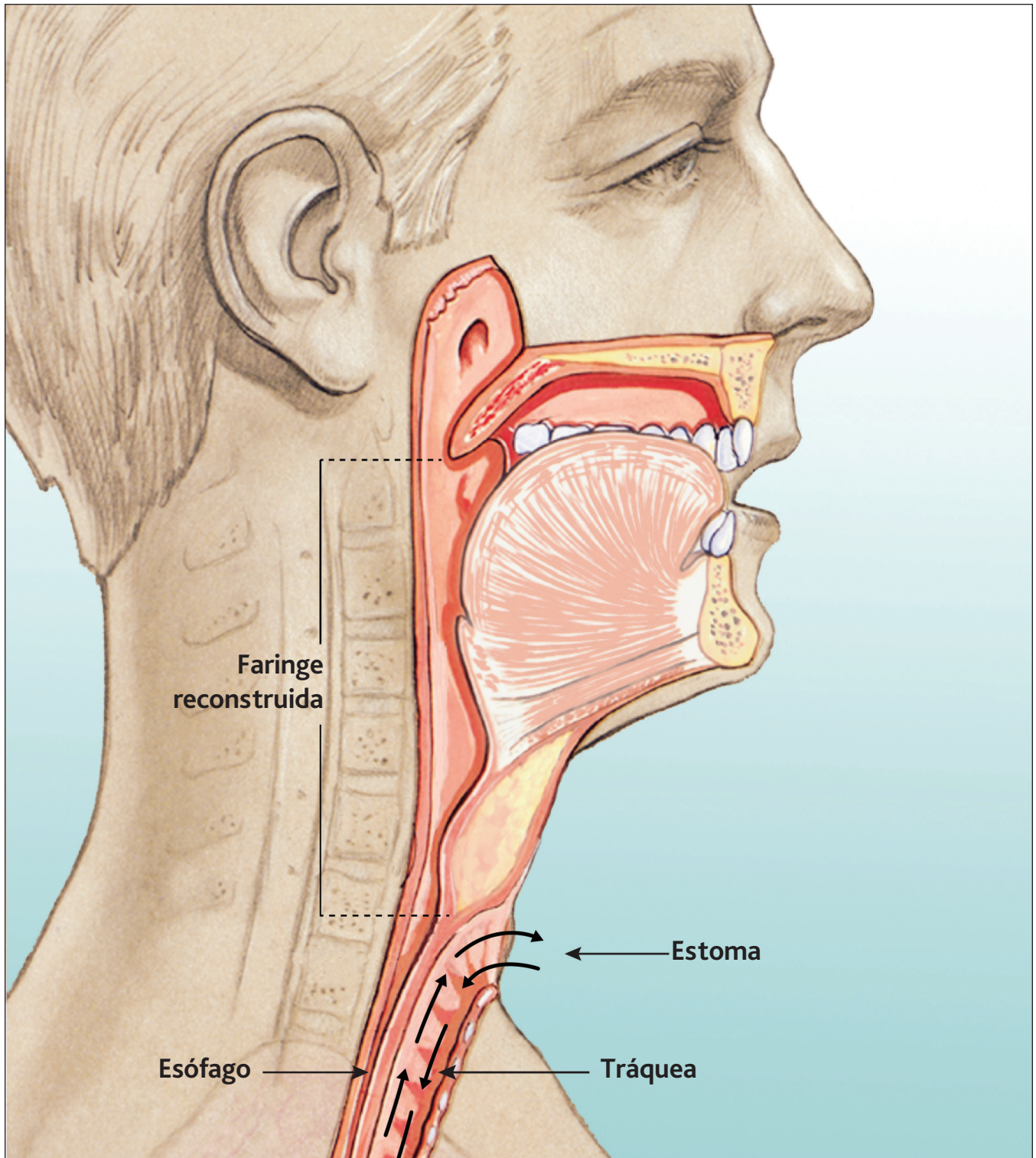


Notas:

INHEALTH[®]
TECHNOLOGIES

Blom-Singer[®]

Después de la laringectomía

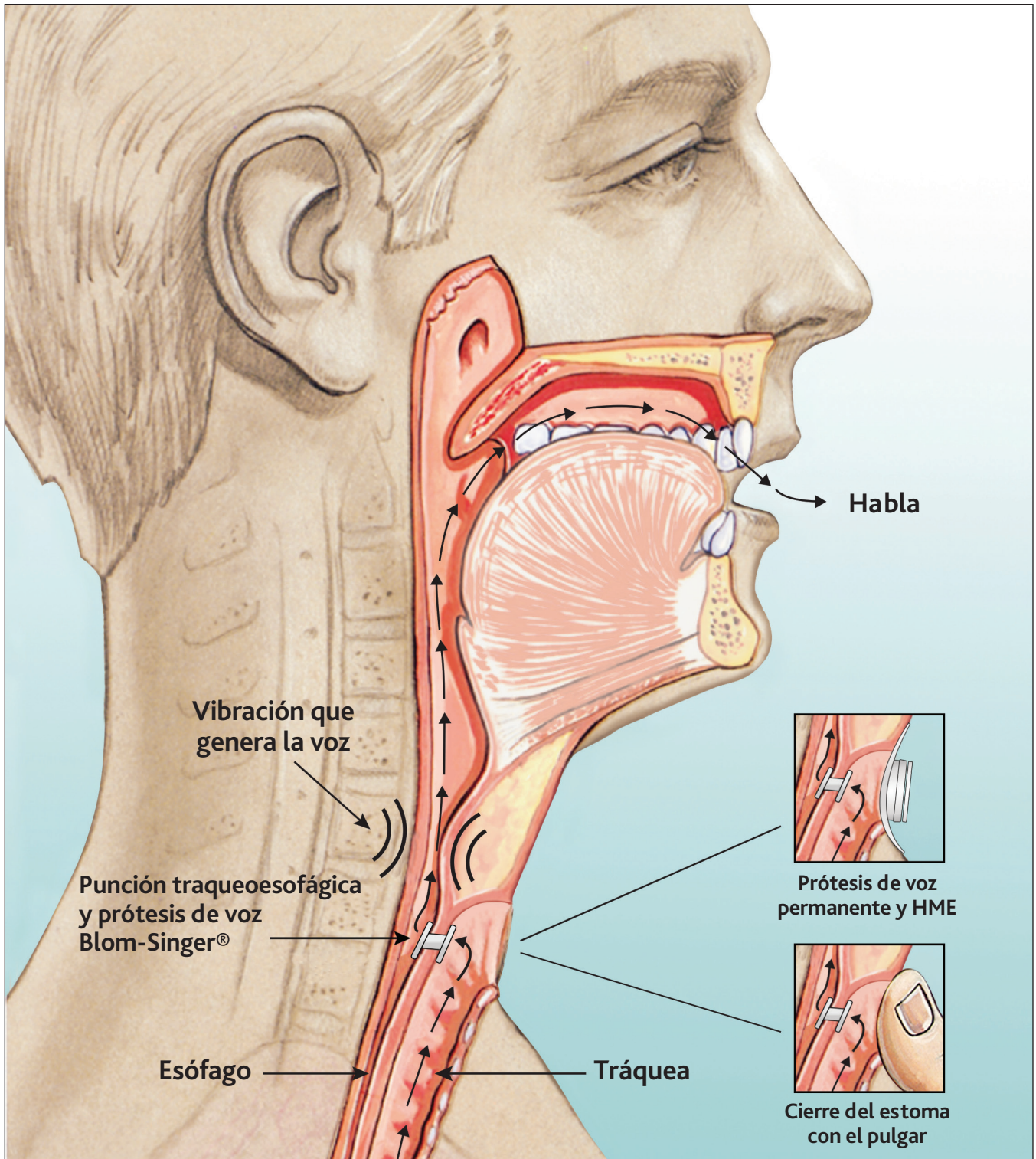


Notas:

INHEALTH[®]
TECHNOLOGIES

Blom-Singer[®]

Prótesis de voz

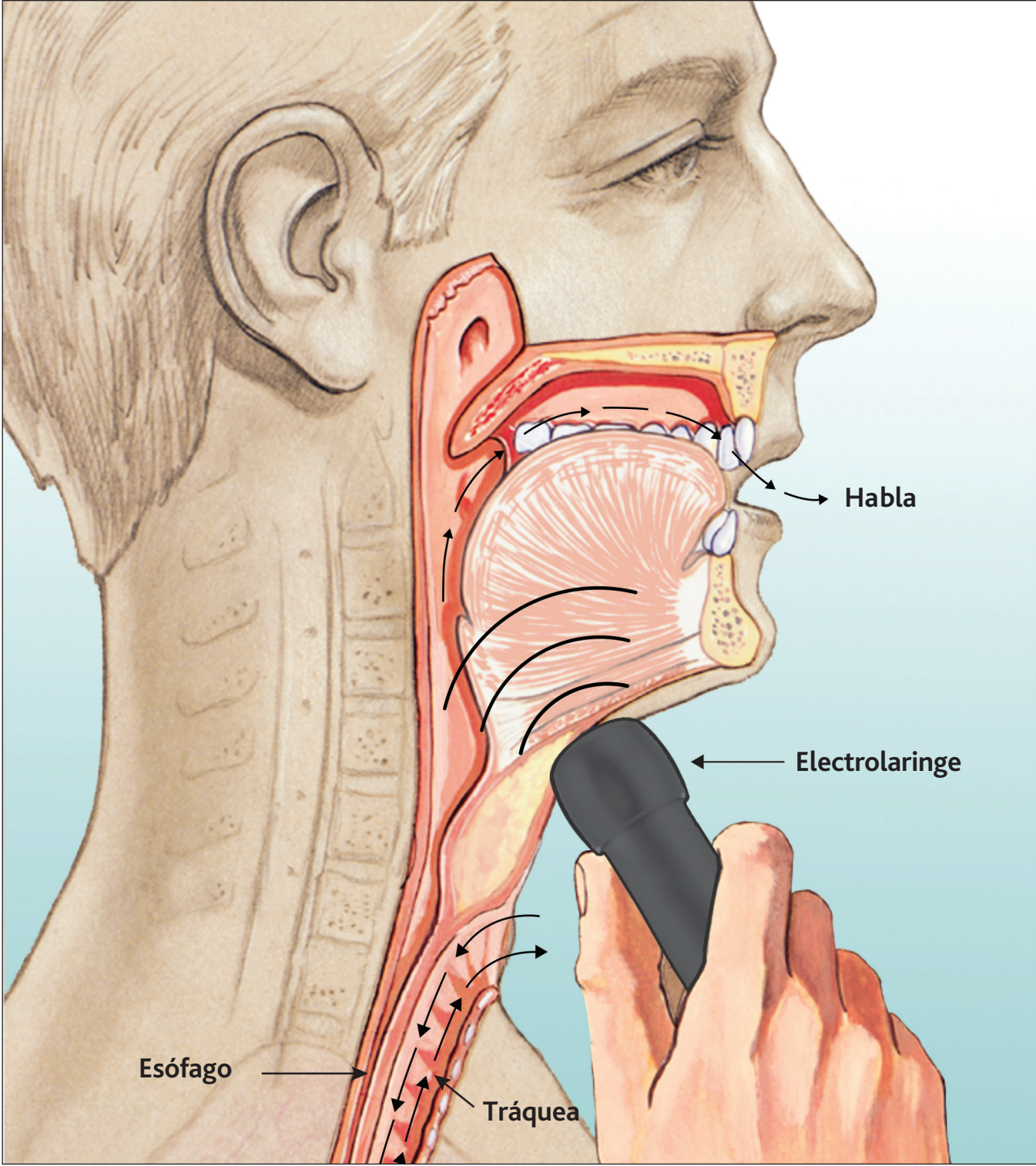


Notas:

INHEALTH[®]
TECHNOLOGIES

Blom-Singer[®]

Electrolaringe

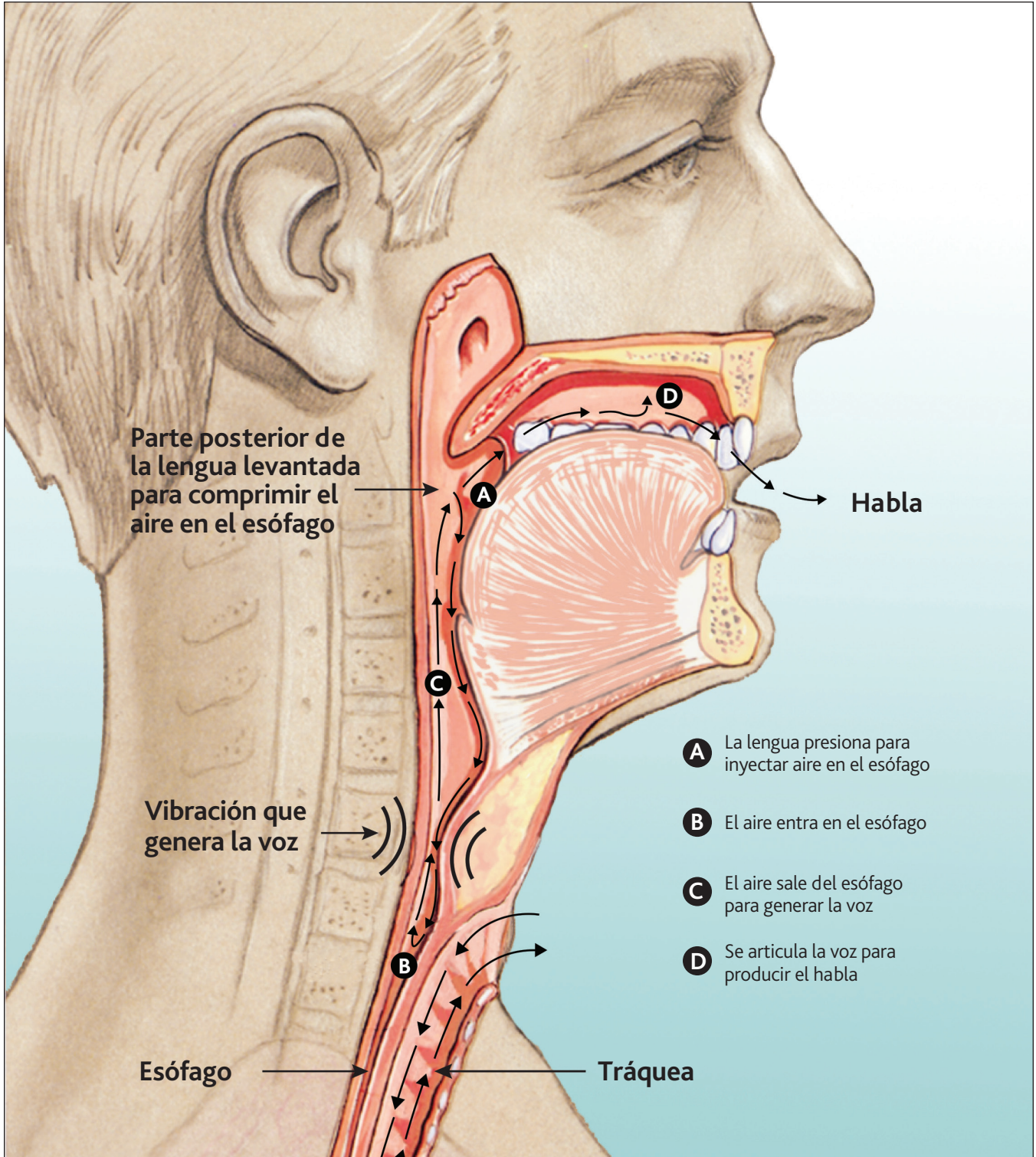


Notas:

INHEALTH[®]
TECHNOLOGIES

Blom-Singer[®]

Habla esofágica



Notas:

INHEALTH[®]
TECHNOLOGIES

Blom-Singer[®]